
1 ADDENDUM #2

ALL CLAUSES SET FORTH IN THE BIDDING DOCUMENTS, CONTRACT DOCUMENTS AND GENERAL REQUIREMENTS OF THE ORIGINAL CONTRACT DOCUMENTS SHALL APPLY TO AND GOVERN THIS WORK. THE ADDENDUM REFERS TO CHANGES AND ADDITIONS TO THE ORIGINAL CONTRACT DOCUMENTS AND IS TO BE READ IN CONJUNCTION WITH THE SAME. ALL OTHER PARTS OF THE ORIGINAL CONTRACT DOCUMENTS ARE TO BE CONSIDERED AS APPLYING TO THE WORK OF THIS CONTRACT WITH THE EXCEPTIONS AND CHANGES AS NOTED BELOW.

1.1 ADDENDUM #1

- .1 Reference Architectural Detail Book Item 1.2.2.1 - Sketch ASK-AD031:
 - .1 Reference Door Number 5631, "Remarks" column:
 - .1 Delete the following wording: "Provide floor mounted door stop".
 - .2 Reference Door Number 5635, "Remarks" column:
 - .1 Append the following wording: "(See Spec)".
- .2 Reference Architectural Detail Book Item 1.2.2.2 - Sketch ASK-AD032:
 - .1 Reference Door Number 5655, "Remarks" column:
 - .1 Delete the following wording: "Provide floor mounted door stop"

1.2 SPECIFICATIONS (VOLUMES 1 & 2)

- .1 Reference New Section 08 71 00 - Door Hardware:
 - .1 Attached and forming part of this addendum is new specification Section 08 71 00 - Door Hardware.
- .2 Reference Section 23 33 16 - Dampers - Fire and Smoke:
 - .1 Add new paragraph "1.6 - Acceptable Material" as follows:

"1.6 ACCEPTABLE MATERIAL:

 - .1 EH Price, Greenheck, Ruskin, Metalfab, Titus, Nailor."
- .3 Reference Section 23 34 00 - HVAC Fans:
 - .1 Add new paragraph "1.6 - Acceptable Material" as follows:

"1.6 ACCEPTABLE MATERIAL:

 - .1 Greenheck, ACME, Twincity, Cook, S&P, Penn."
- .4 Reference Section 23 73 10 - Air Handling - Built-Up:
 - .1 Reference Paragraph 2.2.2:
 - .1 Append the following wording: "Napier Engineering, Greenheck, Ingenia, Daikin Applied, Madok, Modine, US Coil and Air, Sigma, Direct Coil".
- .5 Reference Section 25 30 03 - EMCS - Variable Frequency Drives (to 600 Volts)
 - .1 Add new paragraph "1.5 - Acceptable Material" as follows:

"1.5 ACCEPTABLE MATERIAL:

 - .1 ABB, Johnson Controls, Siemens, Danfoss, Eaton."

1.3 ARCHITECTURAL DETAIL BOOK (VOLUME 3)

- .1 Reference Drawing AD020 – Room Finish Schedule Notes & Abbreviations:
 - .1 Reference Finish Schedule Abbreviations:
 - .1 Append the following wording: "ACT-V – Vinyl Coated Acoustic Tile".
 - .2 Reference Finish Schedule Notes:
 - .1 Delete reference to A152 and replace with A152r1.
 - .2 Delete reference to A142 and replace with A142r1.
 - .2 Reference Drawing AD051 - Door Frame Types:
 - .1 Remove detail sheet in its entirety and replace with revised version "AD051r1 – Door Frame Types", attached and forming part of this addendum.
 - .3 Reference Drawings AD070 to AD075 - Accessory Schedule (inclusive)
 - .1 Delete Drawing AD070 and replace with replace with revised version "AD070r1 – Accessory Schedule and Responsibility Abbreviations".
 - .2 Delete Drawing AD071 and replace with replace with revised version "AD071r1 – Accessory Schedule".
 - .3 Delete Drawing AD072 and replace with replace with revised version "AD072r1 – Accessory Schedule".
 - .4 Delete Drawing AD073 and replace with replace with revised version "AD073r1 – Accessory Schedule".
 - .5 Delete Drawing AD074 and replace with replace with revised version "AD074r1 – Accessory Schedule".
 - .6 Delete Drawing AD075 and replace with replace with revised version "AD075r1 – Accessory Schedule".
 - .4 Reference New Drawing AD076 - Accessory Schedule:
 - .1 New Detail Drawing AD076 is attached and forming part of this addendum.
 - .5 Reference Drawing AD090 - Assembly Schedules:
 - .1 Reference Floor Types "F1":
 - .1 Delete the following wording: "...on all metal decking, beams/joists & columns supporting the floor. The columns supporting the roof do not require fire proofing."
 - .2 Append the following wording: "Refer to Drawing A040 - Code Plans & Sections for extents."
 - .6 Reference Drawing AD091 - Assembly Schedule:
 - .1 Reference Exterior Wall Type "EW2":
 - .1 Append the following wording to note: "152mm metal studs @ 400mm O.C.: "c/w batt insulation (fill cavity)".
 - .7 Reference Drawing AD095 - Interior Partition Types & Drawing AD096 - Interior Partition Types:
 - .1 Append the following wording:
"Note: Refer to room finish schedule and drawing A152 for nature and extent of GB types."
 - .8 Drawing AD100 – Connection Detail @ Existing Wall (GL-1a & GL-U) and Adjacent Window Infill:
 - .1 Delete drawing as originally issued and replace with "AD100r1 - Connection Detail @ Existing Wall (GL-1a & GL-U) and Adjacent Window Infill" dated April 6, 2022, attached and forming part of this addendum.
-

-
- .9 Reference Drawing AD317 – Typical Window Head Detail:
 - .1 Add the following wording: “Note: All caulking at interior to be pick proof.”
 - .10 Reference Drawing AD318 – Typical Window Sill Detail:
 - .1 Add the following wording: “Note: All caulking at interior to be pick proof.”

1.4 DRAWINGS (VOLUMES 4 & 5)

- .1 Reference New Sketches ASK-001 & ASK-002:
 - .1 New sketch ASK-001 Revised Cabinet Sizes in Medication Room 5674 and new sketch ASK-002 Revisions to Exam 5636 Plan and Elevations, are attached and forming part of this addendum.
- .2 Reference Drawing M110 – Level 200 Plumbing – Domestic Water:
 - .1 Reference Plumbing Fixture Schedule:
 - .1 Reference Tag "L-2": Add the following wording to the "Notes" column:
"Sink to meet Bariatric Loading Requirements. Carrier to be Whitehall Model - MC mounting carrier rated for 750 lbs installed at ADA Height 32-1/4 inches AFF. Provide Temperature-pressure mixing valve Whitehall Model - MXTP."
- .3 Reference Drawing M300 – Penthouse & Roof Plan:
 - .1 Reference Detail 3:
 - .1 Route 38mmØ HWS & HWR, 38mmØ LTHWS & LTHWR, and 457 x 254mm Exhaust air duct as tight to the existing exhaust air plenum as possible, to not impede access through the existing penthouse access door.
- .4 Reference Drawing M303 – Penthouse & Roof Plan:
 - .1 Reference Detail 2:
 - .1 Relocate the installation of smoke dampers in ductwork on the return side of AHU (project North side) to be installed in vertical ductwork on lower level (Level 300). Provide for the demolition and reinstatement of the existing wall to accommodate this work. Refer to sketch MSK-002, attached and forming part of this addendum, for further information.
 - .2 Reference Smoke and Fire Damper Schedule:
 - .1 Reference Tag "SD-5", Notes Column:
 - .1 Delete wording as written and replace with "Smoke Damper".
 - .2 Reference Tag "SD-6", Notes Column:
 - .1 Delete wording as written and replace with "Smoke Damper".
- .5 Reference Drawing M311 – Ventilation Details:
 - .1 **Clarification:** Refer to new Detail of AHU-14 line diagram, as shown on sketch MSK-001, attached and forming part of this addendum.
- .6 Reference Drawing M400 – Level 100 Sprinkler:
 - .1 Reference Detail 1:
 - .1 Relocate sprinkler heads project west of gridline Ba shown to be on the edge of bulkhead, further project west. Refer to MSK-003 for further information
 - .2 Provide sprinkler head coverage underneath bulkhead near Ba, refer to sketch MSK-003, attached and forming part of this addendum, for further information.

END OF SECTION

This page intentionally left blank

1 General

1.1 SUMMARY

- .1 Supply and deliver all finish hardware as specified in hardware sets for doors listed on door schedule. Hardware shall include all fasteners and devices necessary for the proper installation of hardware.

1.2 RELATED REQUIREMENTS

- .1 Section 08 11 13 - Hollow Metal Doors and Frames.
- .2 Section 08 14 16 - Flush Wood Doors.
- .3 Section 08 41 13 - Aluminum-Framed Entrance and Storefronts.
- .4 Electrical wiring.

1.3 REFERENCES

- .1 Canadian Steel Door and Frame Manufacturers' Association (CSDFMA).
 - .1 CSDFMA Canadian Metric Guide for Steel Doors and Frames (Modular Construction) prepared by Canadian Steel Door and Frames Manufacturer's Association.
- .2 Canadian General Standards Board (CGSB).
 - .1 CAN/CGSB 69.17 M86(R1993), Bored and reassembled Locks and Latches.
 - .2 CAN/CGSB 69.18 M90/ANSI/BHMA A156.1 1981, Butts and Hinges.
 - .3 CAN/CGSB 69.19 93/ANSI/BHMA A156.3 1984, Exit Devices.
 - .4 CAN/CGSB 69.20 M90/ANSI/BHMA A156.4 1986, Door Controls (Closers).
 - .5 CAN/CGSB 69.21 M90/ANSI/BHMA A156.5 1984, Auxiliary Locks and Associated Products.
 - .6 CAN/CGSB 69.22 M90/ANSI/BHMA A156.6 1986, Architectural Door Trim.
 - .7 CAN/CGSB 69.24 M90/ANSI/BHMA A156.8 1982, Door Controls Overhead Holders.
 - .8 CAN/CGSB 69.26 96/ANSI/BHMA A156.10 1991, Power operated Pedestrian Doors.
 - .9 CAN/CGSB 69.28 M90/ANSI/BHMA A156.12 1986, Interconnected Locks and Latches.
 - .10 CAN/CGSB 69.29 93/ANSI/BHMA A156.13 1987, Mortise Locks and Latches.
 - .11 CAN/CGSB 69.30 93/ANSI/BHMA A156.14 1991, Sliding and Folding Door Hardware.
 - .12 CAN/CGSB 69.31 M89/ANSI/BHMA A156.15 1981, Closer/Holder Release Device.
 - .13 CAN/CGSB 69.32 M90/ANSI/BHMA A156.16 1981, Auxiliary Hardware.
 - .14 CAN/CGSB 69.33 M90/ANSI/BHMA A156.17 1987, Self closing Hinges and Pivots.
 - .15 CAN/CGSB 69.34 93/ANSI/BHMA A156.18 1987, Materials and Finishes.
 - .16 CAN/CGSB 69.35 M89/ANSI/BHMA A156.19 1984, Power Assist and Low Energy Power Operated Doors.
 - .17 CAN/CGSB 69.36 M90/ANSI/BHMA A156.20 1984, Strap and Tee Hinges and Hasps.
- .3 All hardware shall comply with requirements of the National Building Code (2010).

1.4 REQUIREMENTS OF REGULATORY AGENCIES

- .1 Use ULC listed and labeled hardware for doors in fire separations and where noted on Door Schedule (located at the end of this document in the Schedules section).

1.5 SUBMITTALS

- .1 Product Data:
 - .1 Submit manufacturer's printed product literature, specifications and data sheet in accordance with Section 01 33 00 - Submittal Procedures.
- .2 Hardware List:
 - .1 Submit Finish Hardware Schedule electronically for approval.

-
- .2 Schedule shall be written in accordance with DHI Sequence and Format for vertical hardware schedule publication.
 - .3 Schedule shall reference item and door number to hardware set specified.
 - .4 Door index to be included referencing the door number to scheduled item number.
 - .5 Submit electronic copies of keying schedules for approval.
 - .6 Schedule shall be written in accordance with DHI Handbook Keying Schedule Systems and Nomenclature. Coordinate all keying in writing.
 - .3 Manufacturer's Instructions:
 - .1 Submit manufacturer's installation instructions.
 - .2 Provide template drawings as requested.
 - .4 Closeout Submittals
 - .1 Provide operation and maintenance data for door closers, lockets, door holders electrified hardware and fire exit hardware for incorporation into manual specified in Section 01 78 00 - Closeout Submittals.

1.6 QUALITY ASSURANCE

- .1 Hardware supplier must have on staff an Architectural Hardware Consultant or person of equivalent qualification and experience. Hardware supplier must have been in hardware supply for a minimum of two (2) years, have supplied similar type projects, and have adequate facilities to service project.

1.7 DELIVERY, STORAGE, AND HANDLING

- .1 Trade Contractor to provide clean, dry locked room for storage of hardware on shelving.
- .2 Each hardware item shall be delivered to site in manufacturers original packaging. Each item shall be labeled with door and item number to correspond with hardware schedule.
- .3 All hardware will be delivered to one receiving area on site.

1.8 WARRANTY

- .1 Furnish a one-year written warranty for all products with exceptions of door closers, Mortise locksets and latchsets which shall be warranted for ten (10) years, and exit devices and trim, overhead holders and stops which shall be warranted for five (5) years.

1.9 WASTE DISPOSAL AND MANAGEMENT

- .1 Collect and separate for disposal waste material generated by this Section.
- .2 Place in appropriate on-site bins in accordance with Waste Management Plan.
- .3 A clean worksite is mandatory at all times. Failure to maintain the site in a clean, safe condition shall result in the Owner initiating a clean-up and related costs being deducted from progress claims.

2 Products

2.1 MANUFACTURERS

- .1 Acceptable Material: Specified in Hardware Sets.

2.2 FINISH

- .1 Finish for this project in general shall be 626 (Satin Chrome). Exceptions are as noted in hardware packages.

2.3 KEYING

- .1 All cylinders construction, master keyed.
- .2 Provide three (3) master keys for each MK or GMK group.
- .3 Stamp keying code numbers on keys and cores.

2.4 FASTENINGS

- .1 Use only fasteners provided by manufacturer. Failure to comply may void warranties and applicable licensed labels.
- .2 Supply screws, bolts, expansion shields and other fastening devices required for satisfactory installation and operation of hardware.
- .3 Exposed fastening devices to match finish of hardware.
- .4 Where pull is scheduled on one side of door and push plate on other side, supply fastening devices, and install so pull can be secured through door from reverse side. Install push plate to cover fasteners.
- .5 Use fasteners compatible with material through which they pass.

3 Execution

3.1 MANUFACTURER'S INSTRUCTIONS

- .1 Compliance: comply with manufacturer's written data, including product technical bulletins, product catalogue installation instructions, product carton installation instructions, and data sheets.
- .2 Furnish metal door and frame manufacturers with complete instructions and templates for preparation of their work to receive hardware.
- .3 Recommend mounting heights shall be in accordance with Canadian Metric Guide for Steel Doors and Frames (Modular Construction) prepared by Canadian Steel Door and Frame Manufacturer's Association.
- .4 Furnish manufacturers' instructions for proper installation of each hardware component.

3.2 INSTALLATION

- .1 Install hardware to standard hardware location dimensions in accordance with Canadian Metric Guide for Steel Doors and Frames (Modular Construction) prepared by Canadian Steel Door and Frame Manufacturers' Association.
- .2 Where door stop contacts door pulls, mount stop to strike bottom of pull.
- .3 Install key control cabinet.
- .4 Use only manufacturer's supplied fasteners. Failure to comply may void manufacturer's warranties and applicable licensed labels. Use of "quick" type fasteners, unless specifically supplied by manufacturer, is unacceptable.
- .5 Remove construction cores when directed by Consultant; install permanent cores and check operation of locks.

3.3 ADJUSTING

- .1 Adjust door hardware, operators, closures and controls for optimum, smooth operating condition, safety, weather tight closure and to provide tight fit at contact points with frames.

3.4 CLEANING

- .1 Perform cleaning after installation to remove construction and accumulated environmental dirt.
- .2 Clean hardware with damp rag and approved non-abrasive cleaner, and polish hardware in accordance with manufacturer's instructions.
- .3 Remove protective material from hardware items where present.

3.5 PROTECTION

- .1 Provide proper protection of all hardware items until Owner accepts project as complete.
-

3.6 DOOR INDEX

<u>Opening Numbers</u>	<u>Heading Numbers</u>	<u>Opening Numbers</u>	<u>Heading Numbers</u>	<u>Opening Numbers</u>	<u>Heading Numbers</u>
1905.1	26.0	5638	4.1	5664A.1	18.0
1905.2	27.0	5639	9.0	5664A.2	19.0
1905a	25.0	5640.1	5.1	5664B.1	18.0
5114	15.0	5640.2	11.0	5664B.2	19.0
5600	1.0	5641A	23.0	5664C.1	20.0
5601	2.0	5642	12.0	5664C.2	20.0
5602	3.0	5645	13.0	5667	4.0
5612	3.0	5645a	14.0	5668	4.0
5615	4.0	5646	12.0	5669	4.0
5620	5.0	5651	15.1	5673	22.0
5621	6.0	5652	4.0	5674	24.0
5623	6.0	5653	4.0	5676	22.0
5625	7.1	5655	28.0	5677	21.0
5626	6.0	5656	7.0	Misc	33.0
5627	6.0	5658	17.0		
5631	28.0	5659	16.0		
5633	2.0	5660	5.0		
5635	8.0	5661	2.0		
5636	9.0	5662	4.0		
5637	10.0	5663	4.0		

3.7 HARDWARE GROUPS

.1 Hardware Group No. 1

Pair 5600, 2436 x 2134 x 45, Hollow Metal x Hollow Metal, 45 min

6	Hinge, Full Mortise, Hvy Wt	HTA786 127mm x 114mm	US26D	MK
2	Concealed Vert Rod Exit, Exit Only	12 NB 36 WD8610 EO	US32D	SA
2	Surface Closer	36 1431 P10	EN	SA
4	Kick Plate	K1050 203mm x 25mm SA	US32D	RO
		TORX Screws		
2	Wall Stop	406 (Convex HD)	US32D	RO
2	Electromagnetic Holder	998M 120VAC (x Sec Screws)	689	RF
2	Armature	900	689	RF
2	Spacer	900-200	689	RF
2	Spacer	900-Z	689	RF
2	Gasketing	S88BL x 3 Sides		PE
2	Concealed Door Bottom (HM Doors)	420APKL x Door Width		PE
1	Astragal	357SP x Door Height		PE

Notes:

REQUIRES 120VAC POWER TO ELECTROMAGNETIC HOLD OPEN LOCATION BY DIVISION 26.

REQUIRES FIRE ALARM CONTACT TO ELECTROMAGNETIC HOLD OPEN. ELECTROMAGNETIC HOLD OPEN TO RELEASE ON FIRE ALARM.

.2 Hardware Group No. 2

Single 5601, 965 x 2134 x 45, Wood x Hollow Metal,
Single 5633, 965 x 2134 x 45, Wood x Hollow Metal,
Single 5661, 1067 x 2134 x 45, Wood x Hollow Metal

3	Continuous Hinge	DSH1000 x Door Height x Torx WxW		PE
1	Privacy Lock	3 36 9265 BHW	US32D	SA
1	Thumb Turn	130KBHA	32D	SA
1	Curved Lip Strike	808 Strike x Lip Legth (Jamb Depth - 2.875 + 0.025)	26D	SA
1	Wall Stop	406 (Convex HD)	US32D	RO
1	Emergency Stop	ERS84C-NOTCHxHT-LH		PE
1	Sweep	18100CNB x Door Width		PE

Notes:

FRAME TO BE LARGER THAT THE WIDTH OF THE DOOR BY THE WIDTH OF THE DOUBLE ACTING HINGE.

FRAME TO BE CASED OPEN ON THE HINGE AND HEADER. STRIKE JAMB TO BE SINGLE RABBET AS PER THE TEMPLATE.

FRAME TO BE REINFORCED ON THE HINGE JAMB AS PER THE INSTALLATION INSTRUCTIONS.

.3 **Hardware Group No. 3.0**

Single 5602, 965 x 2134 x 45, Wood x Aluminum,
Single 5612, 965 x 2134 x 45, Wood x Hollow Metal,

3	Hinge, Full Mortise, Hvy Wt	HTA786 127mm x 114mm	US26D	MK
1	Storeroom/Closet Lock	3 36 70 9204 LNJ	US26D	SA
1	Permanent Core	1C72 x Kwy x Master Keyed (Supplied and Installed by Owner)	626	BE
1	Electric Strike	1600-CS-LMS	630	HS
1	SMART Pac Bridge Rectifier	2005M3		HS
1	Surface Closer	36 1431 O	EN	SA
1	Wall Stop	406 (Convex HD)	US32D	RO
1	Gasketing	S88BL x 3 Sides		PE
1	Automatic Door Bottom	434ARL x Door Width x End Caps		PE
1	Position Switch	DPS-W-BK		SU
1	Power Supply	AQD1-4F1		SU
1	By Others	Card Reader		00
1	Access Control Panel	Axiom RC-2	Std	OT
1	Wiring Diagrams	Wiring Diagrams (Elevations & Point to Point)	Std	SA

Notes:

REQUIRES 120VAC POWER TO POWER SUPPLY LOCATION BY ELECTRICAL CONTRACTOR.

REQUIRES LOW VOLTAGE FROM POWER SUPPLY TO ELECTRIC STRIKE CONTRACTOR.

REQUIRES LOW VOLTAGE AND COMMUNICATION WIRE BY ELECTRICAL CONTRACTOR.

REQUIRES CONDUIT TO BE SUPPLIED AND INSTALLED BY ELECTRICAL CONTRACTOR.

REQUIRES WIRE AND WIRE PULL BY ELECTRICAL CONTRACTOR.

MODE OF OPERATION:

CARD ACCESS. DOOR TO BE SECURED BY STOREROOM FUNCTION LOCK AT ALL TIMES.

ENTRY BY AUTHORIZED CARD OR KEY. ENTRY BY AUTHORIZED CARD WILL ACTIVATE ELECTRIC STRIKE FOR DOOR TO BE MANUALLY OPENED STANDARD FUNCTIONALITY FOR DOOR CONTACTS AND REQUEST TO EXIT. LOCK HAS MECHANICAL KEY OVERRIDE. FREE EXIT AT ALL TIMES.

.4 **Hardware Group No.4**

Single 5615, 1067 x 2134 x 45, Wood x Hollow Metal,
Single 5652, 1067 x 2134 x 45, Wood x Hollow Metal,
Single 5653, 1067 x 2134 x 45, Wood x Hollow Metal,
Single 5662, 1067 x 2134 x 45, Wood x Hollow Metal,
Single 5663, 1067 x 2134 x 45, Wood x Hollow Metal,
Single 5667, 1067 x 2134 x 45, Wood x Hollow Metal,
Single 5668, 1067 x 2134 x 45, Wood x Hollow Metal,
Single 5669, 1067 x 2134 x 45, Wood x Hollow Metal,

3	Hinge, Full Mortise, Hvy Wt	HTA786 127mm x 114mm	US26D	MK
1	Storeroom/Closet Lock	3 36 70 9204 BHW	US32D	SA
1	Permanent Core	1C72 x Kwy x Master Keyed (Supplied and Installed by Owner)	626	BE
1	Wall Stop	406 (Convex HD)	US32D	RO
1	Gasketing	S88BL x 3 Sides		PE
1	Automatic Door Bottom	434ARL x Door Width x End Caps		PE

.5 Hardware Group No. 4.1

Single 5638, 1067 x 2134 x 45, Wood x Hollow Metal,

3	Hinge, Full Mortise, Hvy Wt	HTA786 127mm x 114mm	US26D	MK
1	Storeroom/Service Lock	3 36 70 9206 LNJ	US26D	SA
1	Permanent Core	1C72 x Kwy x Master Keyed (Supplied and Installed by Owner)	626	BE
1	Electric Strike	1600-CS-LMS	630	HS
1	SMART Pac Bridge Rectifier	2005M3		HS
1	Push Pull	92-RKW	US32D	RO
1	Surface Closer	36 1431 O	EN	SA
1	Kick Plate	K1050 203mm x 25mm SA TORX Screws	US32D	RO
1	Wall Stop	406 (Convex HD)	US32D	RO
1	Gasketing	S88BL x 3 Sides		PE
1	Concealed Door Bottom (HM Doors)	420APKL x Door Width		PE
1	Position Switch	DPS-M-BK		SU
1	Power Supply	AQD1-4F1		SU
1	By Others	Card Reader		00
1	Access Control Panel	Axiom RC-2	Std	OT
1	ElectroLynx Harness	QC-C2500P (Cable Length 25.0')		MK
1	Wiring Diagrams	Wiring Diagrams (Elevations & Point to Point)	Std	SA

Notes:

PUSH PLATE TO BE INSTALLED ON THE PUSH SIDE OF THE DOOR.

REQUIRES 120VAC POWER TO POWER SUPPLY LOCATION BY ELECTRICAL CONTRACTOR.

REQUIRES LOW VOLTAGE FROM POWER SUPPLY TO ELECTRIC STRIKE CONTRACTOR.

REQUIRES LOW VOLTAGE AND COMMUNICATION WIRE BY ELECTRICAL CONTRACTOR.

REQUIRES CONDUIT TO BE SUPPLIED AND INSTALLED BY ELECTRICAL CONTRACTOR.

REQUIRES WIRE AND WIRE PULL BY ELECTRICAL CONTRACTOR.

MODE OF OPERATION:

CARD ACCESS. DOOR TO BE SECURED BY STOREROOM FUNCTION LOCK AT ALL TIMES.

ENTRY BY AUTHORIZED CARD OR KEY. ENTRY BY AUTHORIZED CARD WILL ACTIVATE ELECTRIC STRIKE FOR DOOR TO BE MANUALLY OPENED

STANDARD FUNCTIONALITY FOR DOOR CONTACTS AND REQUEST TO EXIT. LOCK HAS MECHANICAL KEY OVERRIDE. FREE EXIT AT ALL TIMES

.6 **Hardware Group No. 5.0**

Pair 5620, 2134 x 2134 x 45, Hollow Metal x Hollow Metal,
Pair 5660, 2134 x 2134 x 45, Hollow Metal x Hollow Metal,

6	Hinge, Full Mortise, Hvy Wt	HTA786 127mm x 114mm	US26D	MK
2	Magnetic Lock	DE M680E	628	SU
2	Concealed Vert Rod Exit, Dummy	12 NB 16 36 53 55 56 WD8610	US32D	SA
		ETJ		
1	Mortise Cylinder	70 42	US32D	SA
1	Permanent Core	1C72 x Kwy x Master Keyed	626	BE
		(Supplied and Installed by Owner)		
2	Power Operator	SW200i	Std	BM
2	Door Operator Actuators	MS11	630	BM
4	Door Opening Scanner	LZR Flatscan 3D SW	BLK	BM
2	Kick Plate	K1050 203mm x 25mm SA TORX	US32D	RO
		Screws		
1	Gasketing	S88BL x 3 Sides		PE
2	Automatic Door Bottom	434ARL x Door Width x End Caps		PE
1	Astragal	357SP x Door Height		PE
2	Position Switch	DPS-W-BK		SU
2	Advanced Logic Relay Controller	CX-33	Std	OT
1	Power Supply	BPS-24-2		SU
1	CFAR x Reset	CFAR-24 x MK x MKS	Std	SU
2	Electric Power Transfer	EL-CEPT		SU
2	By Others	Card Reader		00
2	Access Control Panel	Axiom RC-2	Std	OT
1	By Others	Blue Pull Stations	Std	OT
2	ElectroLynx Harness	QC-C200P (Cable Length 26")		MK
2	ElectroLynx Harness	QC-C2500P (Cable Length 25.0')		MK
1	Wiring Diagrams	Wiring Diagrams (Elevations & Point to Point)	Std	SA

Notes:

REQUIRES 120VAC POWER TO POWER SUPPLY LOCATION BY ELECTRICAL CONTRACTOR.

REQUIRES LOW VOLTAGE FROM POWER SUPPLY TO MAGLOCK LOCATION BY THE CONTRACTOR.

REQUIRES CONDUIT TO BE SUPPLIED AND INSTALLED BY THE ELECTRICAL CONTRACTOR.

REQUIRES LOW VOLTAGE AND COMMUNICATION WIRE BY ELECTRICAL CONTRACTOR.

REQUIRES WIRE AND WIRE PULL BY ELECTRICAL CONTRACTOR.

MODE OF OPERATION:

DOOR TO BE SECURED BY MAGLOCK AT ALL TIMES. ENTRY BY AUTHORIZED CARD. ENTRY BY AUTHORIZED CARD WILL DEACTIVATE MAGLOCK FOR DOOR TO BE MANUALLY OPENED. MAGLOCK TO RELEASE ON FIRE ALARM. MAGLOCK TO BE MANUALLY RESET ON FIRE ALARM.

.7 **Hardware Group No. 5.1**

Pair 5640.1, 2134 x 2134 x 45, Hollow Metal x Hollow Metal,

6	Hinge, Full Mortise, Hvy Wt	HTA786 127mm x 114mm	US26D	MK
2	Magnetic Lock	DE M680E	628	SU
2	Concealed Vert Rod Exit, Exit Only	12 36 53 55 56 WD8610 EO	US32D	SA
2	Mortise Cylinder	70 42	US32D	SA
2	Permanent Core	1C72 x Kwy x Master Keyed	626	BE
		(Supplied and Installed by Owner)		
2	Power Operator	SW200i	Std	BM
2	Door Operator Actuators	MS11	630	BM
4	Door Opening Scanner	LZR Flatscan 3D SW	BLK	BM
4	Kick Plate	K1050 203mm x 25mm SA TORX	US32D	RO
		Screws		
1	Gasketing	S88BL x 3 Sides		PE
1	Concealed Door Bottom (HM Doors)	420APKL x Door Width		PE
1	Astragal	357SP x Door Height		PE
2	Position Switch	DPS-W-BK		SU
2	Advanced Logic Relay Controller	CX-33	Std	OT
1	Power Supply	BPS-24-2		SU
1	CFAR x Reset	CFAR-24 x MK x MKS	Std	SU
2	Electric Power Transfer	EL-CEPT		SU
2	By Others	Card Reader		00
1	Access Control Panel	Axiom RC-2	Std	OT
2	By Others	Blue Pull Stations	Std	OT
2	ElectroLynx Harness	QC-C200P (Cable Length 26")		MK
2	ElectroLynx Harness	QC-C2500P (Cable Length 25.0")		MK
1	Wiring Diagrams	Wiring Diagrams (Elevations & Point to Point)	Std	SA

Notes:

REQUIRES 120VAC POWER TO POWER SUPPLY LOCATION BY ELECTRICAL CONTRACTOR.

REQUIRES LOW VOLTAGE FROM POWER SUPPLY TO MAGLOCK LOCATION BY THE CONTRACTOR

REQUIRES CONDUIT TO BE SUPPLIED AND INSTALLED BY THE ELECTRICAL CONTRACTOR.

REQUIRES LOW VOLTAGE AND COMMUNICATION WIRE BY ELECTRICAL CONTRACTOR.

REQUIRES WIRE AND WIRE PULL BY ELECTRICAL CONTRACTOR.

MODE OF OPERATION:

DOOR TO BE SECURED BY MAGLOCK AT ALL TIMES. ENTRY BY AUTHORIZED CARD. ENTRY BY AUTHORIZED CARD WILL DEACTIVATE MAGLOCK FOR DOOR TO BE MANUALLY OPENED. MAGLOCK TO RELEASE ON FIRE ALARM. MAGLOCK TO BE MANUALLY RESET ON FIRE ALARM.

.8 Hardware Group No. 6.0

Pair 5621, 1778 x 2134 x 45, Hollow Metal x Hollow Metal,
Pair 5623, 1778 x 2134 x 45, Hollow Metal x Hollow Metal,
Pair 5626, 1778 x 2134 x 45, Hollow Metal x Hollow Metal,
Pair 5627, 1778 x 2134 x 45, Hollow Metal x Hollow Metal,

6	Hinge, Full Mortise, Hvy Wt	HTA786 127mm x 114mm	US26D	MK
1	Deadlock	3 36 70 9220	US26D	SA
1	Office/Entry Lock	3 36 70 9205 BHW	US32D	SA
2	Permanent Core	1C72 x Kwy x Master Keyed (Supplied and Installed by Owner)	626	BE
2	Recessed Door Pulls	214S	630	FO
2	Concealed Overhead Stop	36 699S	EN	SA
2	Gasketing	319CS x 3 Sides		PE
2	Automatic Door Bottom	434ARL x Door Width x End Caps		PE

Notes:

THE SOUTHERN FOLGER PULLS TO BE LOCATED ON THE PULL SIDE OF BOTH LEAFS.

.9 Hardware Group No 7.0

Single 5656, 1067 x 2134 x 45, Wood x Hollow Metal,

1	Continuous Hinge	DSH1000 x Door Height x Torx WxW		PE
1	Privacy Lock	3 36 9265 BHW	US32D	SA
1	Curved Lip Strike	808 Strike x Lip Legth (Jamb Depth - 2.875 + 0.025)	26D	SA
1	Wall Stop	406 (Convex HD)	US32D	RO
1	Emergency Stop	ERS84C-NOTCHxHT-LH		PE
1	Sweep	18100CNB x Door Width		PE

Notes:

FRAME TO BE LARGER THAT THE WIDTH OF THE DOOR BY THE WIDTH OF THE DOUBLE ACTING HINGE
FRAME TO BE CASED OPEN ON THE HINGE AND HEADER. STRIKE JAMB TO BE SINGLE RABBET AS PER THE TEMPLATE.
FRAME TO BE REINFORCED ON THE HINGE JAMB AS PER THE INSTALLATION INSTRUCTIONS.

.10 **Hardware Group 7.1**

Single 5625, 1067 x 2134 x 45, Wood x Hollow Metal,

1	Continuous Hinge	DSH1000 x Door Height x Torx WxW		PE
1	Privacy Lock	3 36 9265 BHW	US32D	SA
1	Thumb Turn	130KBHA	32D	SA
1	Curved Lip Strike	808 Strike x Lip Legth (Jamb Depth - 2.875 + 0.025)	26D	SA
1	Wall Stop	406 (Convex HD)	US32D	RO
1	Emergency Stop	ERS84C-NOTCHxHT-LH		PE
1	Sweep	18100CNB x Door Width		PE

Notes:

FRAME TO BE LARGER THAT THE WIDTH OF THE DOOR BY THE WIDTH OF THE DOUBLE ACTING HINGE.

FRAME TO BE CASED OPEN ON THE HINGE AND HEADER. STRIKE JAMB TO BE SINGLE RABBET AS PER THE TEMPLATE.

FRAME TO BE REINFORCED ON THE HINGE JAMB AS PER THE INSTALLATION INSTRUCTIONS.

.11 **Hardware Group 8.0**

Single 5635, 610 x 2134 x 45, Wood x Hollow Metal,

3	Hinge, Full Mortise	HTA714 114mm x 101mm NRP	US26D	MK
1	Deadlock	3 36 70 9220	US26D	SA
1	Permanent Core	1C72 x KwY x Master Keyed (Supplied and Installed by Owner)	626	BE
1	Recessed Door Pulls	214S	630	FO

.12 Hardware Group 9.0

Single 5636, 1067 x 2134 x 45, Wood x Hollow Metal,
Single 5639, 1067 x 2134 x 45, Wood x Hollow Metal,

3	Hinge, Full Mortise, Hvy Wt	HTA786 127mm x 114mm	US26D	MK
1	Storeroom/Service Lock	3 36 70 9206 LNJ	US26D	SA
1	Permanent Core	1C72 x Kwy x Master Keyed	626	BE
		(Supplied and Installed by Owner)		
1	Electric Strike	1600-CLB-LM	630	HS
1	SMART Pac Bridge Rectifier	2005M3		HS
1	Concealed Closer	36 269 CSPD	EN	SA
1	Kick Plate	K1050 203mm x 25mm SA TORX	US32D	RO
		Screws		
1	Wall Stop	415	US26	RO
1	Gasketing	S88BL x 3 Sides		PE
1	Concealed Door Bottom (HM Doors)	420APKL x Door Width		PE
1	Position Switch	DPS-W-BK		SU
1	Power Supply	AQD1-4F1		SU
1	By Others	Card Reader		00
1	Access Control Panel	Axiom RC-2	Std	OT
1	ElectroLynx Harness	QC-C2500P (Cable Length 25.0')		MK
1	Wiring Diagrams	Wiring Diagrams (Elevations & Point to Point)	Std	SA

Notes:

REQUIRES 120VAC POWER TO POWER SUPPLY LOCATION BY ELECTRICAL CONTRACTOR.

REQUIRES LOW VOLTAGE FROM POWER SUPPLY TO ELECTRIC STRIKE CONTRACTOR.

REQUIRES LOW VOLTAGE AND COMMUNICATION WIRE BY ELECTRICAL CONTRACTOR.

REQUIRES CONDUIT TO BE SUPPLIED AND INSTALLED BY ELECTRICAL CONTRACTOR.

REQUIRES WIRE AND WIRE PULL BY ELECTRICAL CONTRACTOR.

MODE OF OPERATION:

CARD ACCESS. DOOR TO BE SECURED BY STOREROOM FUNCTION LOCK AT ALL TIMES.

ENTRY BY AUTHORIZED CARD OR KEY. ENTRY BY AUTHORIZED CARD WILL ACTIVATE ELECTRIC STRIKE FOR DOOR TO BE MANUALLY OPENED STANDARD FUNCTIONALITY FOR DOOR CONTACTS AND REQUEST TO EXIT. LOCK HAS MECHANICAL KEY OVERRIDE. FREE EXIT AT ALL TIMES.

.13 **Hardware Group 10.0**

Single 5637, 1067 x 2134 x 45, Wood x Hollow Metal,

1	Continuous Hinge	DSH1000 x Door Height x Torx WxW		PE
1	Privacy Lock	3 36 9265 BHW	US32D	SA
1	Thumb Turn	130KBHA	32D	SA
1	Curved Lip Strike	808 Strike x Lip Legth (Jamb Depth26D - 2.875 + 0.025)		SA
2	Recessed Door Pulls	214S	630	FO
2	Kick Plate	K1050 203mm x 50mm LDW 4BE CSK	US32D	RO
1	Wall Stop	406 (Convex HD)	US32D	RO
1	Emergency Stop	ERS84C-NOTCHxHT-LH		PE
1	Sweep	18100CNB x Door Width		PE

Notes:

FRAME TO BE LARGER THAT THE WIDTH OF THE DOOR BY THE WIDTH OF THE DOUBLE ACTING HINGE.

FRAME TO BE CASED OPEN ON THE HINGE AND HEADER. STRIKE JAMB TO BE SINGLE RABBET AS PER THE TEMPLATE.

FRAME TO BE REINFORCED ON THE HINGE JAMB AS PER THE INSTALLATION INSTRUCTIONS.

.14

Hardware Group 11.0

Single 5640.2, 1067 x 2134 x 45, Hollow Metal x Hollow Metal,

3	Hinge, Full Mortise, Hvy Wt	HTA786 127mm x 114mm	US26D	MK
1	Magnetic Lock	DE M680E	628	SU
1	Mortise Exit Device, Dummy	12 36 53 55 56 8910 J ETJ	US32D	SA
1	Mortise Cylinder	70 42	US32D	SA
1	Permanent Core	1C72 x Kwy x Master Keyed	626	BE
(Supplied and Installed by Owner)				
1	Power Operator	SW200i	Std	BM
2	Door Operator Actuators	MS11	630	BM
2	Door Opening Scanner	LZR Flatscan 3D SW	BLK	BM
1	Kick Plate	K1050 203mm x 25mm SA TORX	US32D	RO
Screws				
1	Gasketing	W-22 25'	BL	KN
1	Concealed Door Bottom (HM Doors)	420APKL x Door Width		PE
1	Position Switch	DPS-W-BK		SU
1	Advanced Logic Relay Controller	CX-33	Std	OT
1	Power Supply	BPS-24-2		SU
1	CFAR x Reset	CFAR-24 x MK x MKS	Std	SU
1	Electric Power Transfer	EL-CEPT		SU
2	By Others	Card Reader		00
1	Access Control Panel	Axiom RC-2	Std	OT
2	By Others	Blue Pull Stations	Std	OT
1	ElectroLynx Harness	QC-C200P (Cable Length 26")		MK
1	ElectroLynx Harness	QC-C2500P (Cable Length 25.0')		MK
1	Wiring Diagrams	Wiring Diagrams (Elevations & Point to Point)	Std	SA

Notes:

REQUIRES 120VAC POWER TO POWER SUPPLY LOCATION BY ELECTRICAL CONTRACTOR.

REQUIRES LOW VOLTAGE FROM POWER SUPPLY TO MAGLOCK LOCATION BY THE CONTRACTOR.

REQUIRES CONDUIT TO BE SUPPLIED AND INSTALLED BY THE ELECTRICAL CONTRACTOR.

REQUIRES LOW VOLTAGE AND COMMUNICATION WIRE BY ELECTRICAL CONTRACTOR.

REQUIRES WIRE AND WIRE PULL BY ELECTRICAL CONTRACTOR.

MODE OF OPERATION:

DOOR TO BE SECURED BY MAGLOCK AT ALL TIMES. ENTRY BY AUTHORIZED CARD. ENTRY BY AUTHORIZED CARD WILL DEACTIVATE MAGLOCK FOR DOOR TO BE MANUALLY OPENED. MAGLOCK TO RELEASE ON FIRE ALARM. MAGLOCK TO BE MANUALLY RESET ON FIRE ALARM.

.15	Hardware Group 12.0			
	Single 5642, 1220 x 2134 x 45, Hollow Metal x Hollow Metal,			
	Single 5646, 1220 x 2134 x 45, Hollow Metal x Hollow Metal,			
3	Hinge, Full Mortise, Hvy Wt	HTA786 127mm x 114mm	US26D	MK
1	Storeroom/Closet Lock	3 36 70 8204 LNJ	US26D	SA
1	Permanent Core	1C72 x Kwy x Master Keyed	626	BE
		(Supplied and Installed by Owner)		
1	Electric Strike	1600-CLB-LM	630	HS
1	SMART Pac Bridge Rectifier	2005M3		HS
1	Surface Closer	36 1431 O	EN	SA
1	Kick Plate	K1050 900mm x 50mm LDW 4BE	US32D	RO
		CSK		
1	Kick Plate	K1050 203mm x 25mm SA TORX	US32D	RO
		Screws		
1	Wall Stop	406 (Convex HD)	US32D	RO
1	Gasketing	S88BL x 3 Sides		PE
1	Sweep	18100CNB x Door Width		PE
1	Position Switch	DPS-W-BK		SU
1	Power Supply	AQD1-4F1		SU
1	By Others	Card Reader		00
1	Access Control Panel	Axiom RC-2	Std	OT
1	ElectroLynx Harness	QC-2500P (Cable Length 25.0')		MK
1	Wiring Diagrams	Wiring Diagrams (Elevations & Point to Point)	Std	SA

Notes:

REQUIRES 120VAC POWER TO POWER SUPPLY LOCATION BY ELECTRICAL CONTRACTOR.

REQUIRES LOW VOLTAGE FROM POWER SUPPLY TO ELECTRIC STRIKE CONTRACTOR.

REQUIRES LOW VOLTAGE AND COMMUNICATION WIRE BY ELECTRICAL CONTRACTOR.

REQUIRES CONDUIT TO BE SUPPLIED AND INSTALLED BY ELECTRICAL CONTRACTOR.

REQUIRES WIRE AND WIRE PULL BY ELECTRICAL CONTRACTOR.

MODE OF OPERATION:

CARD ACCESS. DOOR TO BE SECURED BY STOREROOM FUNCTION LOCK AT ALL TIMES.

ENTRY BY AUTHORIZED CARD OR KEY. ENTRY BY AUTHORIZED CARD WILL ACTIVATE ELECTRIC STRIKE FOR DOOR TO BE MANUALLY OPENED

STANDARD FUNCTIONALITY FOR DOOR CONTACTS AND REQUEST TO EXIT. LOCK HAS MECHANICAL KEY OVERRIDE. FREE EXIT AT ALL TIMES.

.16	Hardware Group 13.0			
	Single 5645, 915 x 2134 x 45, Hollow Metal x Hollow Metal,			
	3 Hinge, Full Mortise	HTA714 114mm X 101mm	US26D MK	
	1 Magnetic Lock	DE M680E	628 SU	
	1 Mortise Exit Device, Dummy	12 36 53 55 56 8910 G ETJ	US32D SA	
	1 Mortise Cylinder	70 42	US32D SA	
	1 Permanent Core	1C72 x Kwy x Master Keyed (Supplied and Installed by Owner)	626 BE	
	1 Power Operator	SW200i	Std BM	
	2 Door Operator Actuators	MS11	630 BM	
	2 Door Opening Scanner	LZR Flatscan 3D SW	BLK BM	
	1 Kick Plate	K1050 203mm x 25mm SA TORX Screws	US32D RO	
	1 Gasketing	S88BL x 3 Sides	PE	
	1 Sweep	18100CNB x Door Width	PE	
	1 Position Switch	DPS-W-BK	SU	
	1 Advanced Logic Relay Controller	CX-33	Std OT	
	1 Power Supply	BPS-24-2	SU	
	1 CFAR x Reset	CFAR-24 x MK x MKS	Std SU	
	1 Electric Power Transfer	EL-CEPT	SU	
	2 By Others	Card Reader	00	
	1 Access Control Panel	Axiom RC-2	Std OT	
	1 By Others	Blue Pull Stations	Std OT	
	1 ElectroLynx Harness	QC-C200P (Cable Length 26")	MK	
	1 ElectroLynx Harness	QC-C2500P (Cable Length 25.0')	MK	
	1 Wiring Diagrams	Wiring Diagrams (Elevations & Point to Point)	Std SA	

Notes:

REQUIRES 120VAC POWER TO POWER SUPPLY LOCATION BY ELECTRICAL CONTRACTOR.

REQUIRES LOW VOLTAGE FROM POWER SUPPLY TO MAGLOCK LOCATION BY THE CONTRACTOR.

REQUIRES CONDUIT TO BE SUPPLIED AND INSTALLED BY THE ELECTRICAL CONTRACTOR.

REQUIRES LOW VOLTAGE AND COMMUNICATION WIRE BY HARDWARE SUPPLIER.

REQUIRES WIRE AND WIRE PULL BY HARDWARE SUPPLIER.

MODE OF OPERATION:

DOOR TO BE SECURED BY MAGLOCK AT ALL TIMES. ENTRY BY AUTHORIZED CARD. ENTRY BY AUTHORIZED CARD WILL DEACTIVATE MAGLOCK FOR DOOR TO BE MANUALLY OPENED. MAGLOCK TO RELEASE ON FIRE ALARM. MAGLOCK TO BE MANUALLY RESET ON FIRE ALARM

.17 **Hardware Group 14.0**

Single 5645a, 1220 x 2134 x 45, Hollow Metal x Hollow Metal,

3	Hinge, Full Mortise, Hvy Wt	H TA386 127mm x 114mm NRP	US26D	MK
1	Institutional Lock	3 36 V11 70 8252 LNJ	US26D	SA
1	Permanent Core	1C72 x Kwy x Master Keyed	626	BE
		(Supplied and Installed by Owner)		
1	Surface Overhead Stop	36 598S	US26D	SA
1	Surface Closer	36 1431 P3	EN	SA
1	Threshold	185AV x Door Width		PE
1	Gasketing	290AS x 3 Sides		PE
1	Gasketing	S88BL x 3 Sides		PE
1	Sweep	18100CNB x Door Width		PE
1	Position Switch	DPS-W-BK		SU

.18 **Hardware Group 15.0**

Single 5114, 915 x 2134 x 45, Wood x Hollow Metal,

1	Hinge, Full Mortise	HTA714 114mm X 101mm	US26D	MK
1	Classroom Lock	3 36 70 8237 LNJ	US26D	SA
1	Permanent Core	1C72 x Kwy x Master Keyed	626	BE
		(Supplied and Installed by Owner)		
1	Wall Stop	406 (Convex HD)	US32D	RO
1	Gasketing	290AS x 3 Sides		PE
1	Concealed Door Bottom (HM Doors)	420APKL x Door Width		PE

.19 **Hardware Group 15.1**

Single 5651, 965 x 2134 x 45, Wood x Hollow Metal,

3	Hinge, Full Mortise, Hvy Wt	HTA786 127mm x 114mm	US26D	MK
1	Classroom Lock	3 36 70 8237 BHW x LNJ	US32D	SA
		(Special Order)		
1	Permanent Core	1C72 x Kwy x Master Keyed	626	BE
		(Supplied and Installed by Owner)		
1	Wall Stop	406 (Convex HD)	US32D	RO
1	Gasketing	290AS x 3 Sides		PE
1	Concealed Door Bottom (HM Doors)	420APKL x Door Width		PE

Notes:

CLASSROOM LOCK TO HAVE BHW TRIM ON CORRIDOR SIDE OF THE DOOR AND THE LNJ ON THE OFFICE SIDE OF THE DOOR.

.20 **Hardware Group 16.0**

Single 5659, 965 x 2134 x 45, Wood x Hollow Metal,

3	Hinge, Full Mortise, Hvy Wt	HTA786 127mm x 114mm	US26D	MK
1	Storeroom/Closet Lock	3 36 70 8204 BHW x LNJ (Special Order)	US32D	SA
1	Permanent Core	1C72 x Kwy x Master Keyed (Supplied and Installed by Owner)	626	BE
1	Electric Strike	1600-CLB-LM	630	HS
1	SMART Pac Bridge Rectifier	2005M3		HS
1	Surface Closer	36 1431 O	EN	SA
1	Kick Plate	K1050 203mm x 25mm SA TORX Screws	US32D	RO
1	Wall Stop	406 (Convex HD)	US32D	RO
1	Gasketing	S88BL x 3 Sides		PE
1	Concealed Door Bottom (HM Doors)	420APKL x Door Width		PE
1	Position Switch	DPS-W-BK		SU
1	Power Supply	AQD1-4F1		SU
1	By Others	Card Reader		00
1	Access Control Panel	Axiom RC-2	Std	OT
1	ElectroLynx Harness	QC-C2500P (Cable Length 25.0')		MK
1	Wiring Diagrams	Wiring Diagrams (Elevations & Point to Point)	Std	SA

Notes:

STOREROOM LOCK TO HAVE BHW TRIM ON CORRIDOR SIDE AND LNJ ON THE OFFICE SIDE.

REQUIRES 120VAC POWER TO POWER SUPPLY LOCATION BY ELECTRICAL CONTRACTOR.

REQUIRES LOW VOLTAGE FROM POWER SUPPLY TO ELECTRIC STRIKE CONTRACTOR

REQUIRES LOW VOLTAGE AND COMMUNICATION WIRE BY ELECTRICAL CONTRACTOR.

REQUIRES CONDUIT TO BE SUPPLIED AND INSTALLED BY ELECTRICAL CONTRACTOR.

REQUIRES WIRE AND WIRE PULL BY ELECTRICAL CONTRACTOR.

MODE OF OPERATION:

CARD ACCESS. DOOR TO BE SECURED BY STOREROOM FUNCTION LOCK AT ALL TIMES.

ENTRY BY AUTHORIZED CARD OR KEY. ENTRY BY AUTHORIZED CARD WILL ACTIVATE ELECTRIC STRIKE FOR DOOR TO BE MANUALLY OPENED

STANDARD FUNCTIONALITY FOR DOOR CONTACTS AND REQUEST TO EXIT. LOCK HAS MECHANICAL KEY OVERRIDE. FREE EXIT AT ALL TIMES.

.21	Hardware Group 17.0			
	<u>Single 5658, 965 x 2134 x 45, Wood x Hollow Metal,</u>			
3	Hinge, Full Mortise, Hvy Wt	HTA786 127mm x 114mm	US26D	MK
1	Storeroom/Closet Lock	3 36 70 8204 LNJ	US26D	SA
1	Permanent Core	1C72 x Kwy x Master Keyed (Supplied and Installed by Owner)	626	BE
1	Electric Strike	1600-CLB-LM	630	HS
1	SMART Pac Bridge Rectifier	2005M3		HS
1	Surface Closer	36 1431 O	EN	SA
1	Kick Plate	K1050 203mm x 25mm SA TORX Screws	US32D	RO
1	Wall Stop	406 (Convex HD)	US32D	RO
1	Position Switch	DPS-M-BK		SU
1	Power Supply	AQD1-4F1		SU
1	By Others	Card Reader		00
1	Access Control Panel	Axiom RC-2	Std	OT
1	ElectroLynx Harness	QC-C2500P (Cable Length 25.0')		MK
1	Wiring Diagrams	Wiring Diagrams (Elevations & Point to Point)	Std	SA

Notes:

REQUIRES 120VAC POWER TO POWER SUPPLY LOCATION BY ELECTRICAL CONTRACTOR.

REQUIRES LOW VOLTAGE FROM POWER SUPPLY TO ELECTRIC STRIKE CONTRACTOR.

REQUIRES LOW VOLTAGE AND COMMUNICATION WIRE BY ELECTRICAL CONTRACTOR.

REQUIRES CONDUIT TO BE SUPPLIED AND INSTALLED BY ELECTRICAL CONTRACTOR.

REQUIRES WIRE AND WIRE PULL BY ELECTRICAL CONTRACTOR.

MODE OF OPERATION:

CARD ACCESS. DOOR TO BE SECURED BY STOREROOM FUNCTION LOCK AT ALL TIMES.

ENTRY BY AUTHORIZED CARD OR KEY. ENTRY BY AUTHORIZED CARD WILL ACTIVATE ELECTRIC STRIKE FOR DOOR TO BE MANUALLY OPENED

STANDARD FUNCTIONALITY FOR DOOR CONTACTS AND REQUEST TO EXIT. LOCK HAS MECHANICAL KEY OVERRIDE. FREE EXIT AT ALL TIMES.

.22 Hardware Group 18.0

Single 5664A.1, 1067 x 2134 x 45, Wood x Hollow Metal,
Single 5664B.1, 1067 x 2134 x 45, Wood x Hollow Metal,

3	Hinge, Full Mortise, Hvy Wt	HTA786 SSF 127 mm x 114 mm	US26D	MK
1	Fail Secure Lock	3 36 70 9273-24V BHW	US32D	SA
1	Mortise Cylinder	70 42	US32D	SA
3	Permanent Core	1C72 x Kwy x Master Keyed	626	BE
		(Supplied and Installed by Owner)		
2	Recessed Door Pulls	214S	630	FO
1	Concealed Closer	36 269 CSPD	EN	SA
1	Gasketing	S88BL x 3 Sides		PE
1	Concealed Door Bottom (HM Doors)	420APKL x Door Width		PE
1	Position Switch	DPS-W-BK		SU
1	Power Supply	AQD1-4F1		SU
1	Electric Power Transfer	EL-CEPT		SU
1	By Others	Card Reader		00
1	Access Control Panel	Axiom RC-2	Std	OT
1	ElectroLynx Harness	QC-C306P (Cable Length 44")		MK
1	ElectroLynx Harness	QC-C2500P (Cable Length 25.0')		MK
1	Wiring Diagrams	Wiring Diagrams (Elevations & Point to Point)	Std	SA

Notes:

REQUIRES 120VAC POWER TO POWER SUPPLY BY ELECTRICAL CONTRACTOR.
REQUIRES LOW VOLTAGE FROM POWER SUPPLY TO ELECTROMECHANICAL LOCK BY THE ELECTRICAL CONTRACTOR
REQUIRES CONDUIT TO BE SUPPLIED AND INSTALLED BY THE ELECTRICAL CONTRACTOR.
REQUIRES LOW VOLTAGE AND COMMUNICATION WIRE BY ELECTRICAL CONTRACTOR.
REQUIRES WIRE AND WIRE PULL BY ELECTRICAL CONTRACTOR.

MODE OF OPERATION:

DOOR TO BE SECURED BOTH SIDES BY ELECTROMECHANICAL LOCK AT ALL TIMES.
ENTRY BY AUTHORIZED CARD WILL UNLOCK THE LEVER AND ALLOW THE LEVER TO BE DEPRESSED AND RETRACT THE LATCH REMOTE RELEASE FROM THE OBSERVATION DESK TO EXIT. STANDARD FUNCTIONALITY FOR DOOR CONTACTS.
LOCK HAS MECHANICAL KEY OVERRIDE.

.23 Hardware Group 19.0

Single 5664A.2, 965 x 2134 x 45, Wood x Hollow Metal,
Single 5664B.2, 965 x 2134 x 45, Wood x Hollow Metal,

3	Hinge, Full Mortise, Hvy Wt	HTA786 SSF 127 mm x 114 mm	US26D	MK
1	Fail Secure Lock	3 36 70 9273-24V BHW	US32D	SA
1	Mortise Cylinder	70 42	US32D	SA
3	Permanent Core	1C72 x Kwy x Master Keyed	626	BE
		(Supplied and Installed by Owner)		
2	Recessed Door Pulls	214S	630	FO
1	Concealed Closer	36 269 CSPD	EN	SA
1	Gasketing	S88BL x 3 Sides		PE
1	Concealed Door Bottom (HM Doors)	420APKL x Door Width		PE
1	Position Switch	DPS-W-BK		SU
1	Power Supply	AQDI-4F1		SU
1	Electric Power Transfer	EL-CEPT		SU
1	By Others	Card Reader		00
1	Access Control Panel	Axiom RC-2	Std	OT
1	ElectroLynx Harness	QC-C306P (Cable Length 44")		MK
1	ElectroLynx Harness	QC-C2500P (Cable Length 25.0')		MK
1	Wiring Diagrams	Wiring Diagrams (Elevations & Point to Point)	Std	SA

Notes:

REQUIRES 120VAC POWER TO POWER SUPPLY BY ELECTRICAL CONTRACTOR.
REQUIRES LOW VOLTAGE FROM POWER SUPPLY TO ELECTROMECHANICAL LOCK BY THE ELECTRICAL CONTRACTOR.
REQUIRES CONDUIT TO BE SUPPLIED AND INSTALLED BY THE ELECTRICAL CONTRACTOR.
REQUIRES LOW VOLTAGE AND COMMUNICATION WIRE BY ELECTRICAL CONTRACTOR.
REQUIRES WIRE AND WIRE PULL BY ELECTRICAL CONTRACTOR.

MODE OF OPERATION:

DOOR TO BE SECURED BOTH SIDES BUY ELECTROMECHANICAL LOCK AT ALL TIMES.
ENTRY BY AUTHORIZED CARD WILL UNLOCK THE LEVER AND ALLOW THE LEVER TO BE DEPRESSED AND RETRACT THE LATCH REMOTE RELEASE FROM THE OBSERVATION DESK TO EXIT. STANDARD FUNCTIONALITY FOR DOOR CONTACTS.
LOCK HAS MECHANICAL KEY OVERRIDE.

.24 Hardware Group 20.0

Single 5664C.1, 1067 x 2134 x 45, Wood x Hollow Metal,
Single 5664C.2, 1067 x 2134 x 45, Wood x Hollow Metal,

3	Hinge, Full Mortise, Hvy Wt	HTA786 SSF 127 mm x 114 mm	US26D	MK
1	Fail Secure Lock	3 36 70 9273-24V BHW	US32D	SA
1	Mortise Cylinder	70 42	US32D	SA
1	Permanent Core	1C72 x Kwy x Master Keyed	626	BE
		(Supplied and Installed by Owner)		
2	Recessed Door Pulls	214S	630	FO
1	Concealed Closer	36 269 CSPD	EN	SA
1	Kick Plate	K1050 203mm x 25mm SA TORX	US32D	RO
		Screws		
1	Gasketing	S88BL x 3 Sides		PE
1	Concealed Door Bottom (HM Doors)	420APKL x Door Width		PE
1	Position Switch	DPS-W-BK		SU
1	Power Supply	AQD1-4F1		SU
1	Electric Power Transfer	EL-CEPT		SU
1	Access Control Panel	Axiom RC-2	Std	OT
1	ElectroLynx Harness	QC-C306P (Cable Length 44")		MK
1	ElectroLynx Harness	QC-C2500P (Cable Length 25.0')		MK
1	Wiring Diagrams	Wiring Diagrams (Elevations & Point to Point)	Std	SA

Notes:

REQUIRES 120VAC POWER TO POWER SUPPLY BY ELECTRICAL CONTRACTOR.
REQUIRES LOW VOLTAGE FROM POWER SUPPLY TO ELECTROMECHANICAL LOCK BY THE ELECTRICAL CONTRACTOR.
REQUIRES CONDUIT TO BE SUPPLIED AND INSTALLED BY THE ELECTRICAL CONTRACTOR.
REQUIRES LOW VOLTAGE AND COMMUNICATION WIRE BY ELECTRICAL CONTRACTOR.
REQUIRES WIRE AND WIRE PULL BY ELECTRICAL CONTRACTOR.

MODE OF OPERATION:

DOOR TO BE SECURED BOTH SIDES BY ELECTROMECHANICAL LOCK AT ALL TIMES.
DOOR TO BE REMOTELY RELEASED FROM THE OBSERVATION DESK. LOCK HAS MECHANICAL KEY OVERRIDE

.25 Hardware Group 21.0

Single 5677, 915 x 2134 x 45, Wood x Hollow Metal,

3	Hinge, Full Mortise	HTA714 114mm X 101mm	US26D	MK
1	Passage Latch	3 8215 LNJ	US26D	SA
1	Wall Stop	406 (Convex HD)	US32D	RO

.26 Hardware Group 22.0

Single 5673, 965 x 2134 x 45, Wood x Hollow Metal,
Single 5676, 965 x 2134 x 45, Wood x Hollow Metal,

3	Hinge, Full Mortise, Hvy Wt	HTA786 127mm x 114mm	US26D	MK
1	Privacy Lock	3 49 8265 LNJ	US26D	SA
1	Wall Stop	406 (Convex HD)	US32D	RO

.27 Hardware Group 23.0

Single 5641A, 965 x 2134 x 45, Wood x Hollow Metal,

3	Hinge, Full Mortise, Hvy Wt	HTA786 127mm x 114mm	US26D	MK
1	Storeroom/Closet Lock	3 36 68 70 9204 LNJ	US26D	SA
1	Permanent Core	1C72 x Kwy x Master Keyed (Supplied and Installed by Owner)	626	BE
1	Electric Strike	1600-CLB-LM	630	HS
1	SMART Pac Bridge Rectifier	2005M3		HS
1	Surface Closer	36 1431 O	EN	SA
1	Wall Stop	406 (Convex HD)	US32D	RO
1	Gasketing	S88BL x 3 Sides		PE
1	Sweep	18100CNB x Door Width		PE
1	Position Switch	DPS-M-BK		SU
1	Power Supply	AQD1-4F1		SU
1	By Others	Card Reader		00
1	Access Control Panel	Axiom RC-2	Std	OT
1	ElectroLynx Harness	QC-C2500P (Cable Length 25.0')		MK
1	Wiring Diagrams	Wiring Diagrams (Elevations & Point to Point)	Std	SA

Notes:

REQUIRES 120VAC POWER TO POWER SUPPLY LOCATION BY ELECTRICAL CONTRACTOR.

REQUIRES LOW VOLTAGE FROM POWER SUPPLY TO ELECTRIC STRIKE CONTRACTOR.

REQUIRES LOW VOLTAGE AND COMMUNICATION WIRE BY ELECTRICAL CONTRACTOR.

REQUIRES CONDUIT TO BE SUPPLIED AND INSTALLED BY ELECTRICAL CONTRACTOR.

REQUIRES WIRE AND WIRE PULL BY ELECTRICAL CONTRACTOR.

MODE OF OPERATION:

CARD ACCESS. DOOR TO BE SECURED BY STOREROOM FUNCTION LOCK AT ALL TIMES.

ENTRY BY AUTHORIZED CARD OR KEY. ENTRY BY AUTHORIZED CARD WILL ACTIVATE ELECTRIC STRIKE FOR DOOR TO BE MANUALLY OPENED

STANDARD FUNCTIONALITY FOR DOOR CONTACTS AND REQUEST TO EXIT. LOCK HAS MECHANICAL KEY OVERRIDE. FREE EXIT AT ALL TIMES.

.28 **Hardware Group 24.0**

Single 5674, 965 x 2134 x 45, Wood x Hollow Metal,

3	Hinge, Full Mortise, Hvy Wt	HTA786 127mm x 114mm	US26D	MK
1	Storeroom/Closet Lock	3 36 68 70 9204 LNJ	US26D	SA
1	Permanent Core	1C72 x Kwy x Master Keyed	626	BE
		(Supplied and Installed by Owner)		
1	Electric Strike	1600-CLB-LM	630	HS
1	SMART Pac Bridge Rectifier	2005M3		HS
1	Surface Closer	36 1431 O	EN	SA
1	Wall Stop	406 (Convex HD)	US32D	RO
1	Position Switch	DPS-W-BK		SU
1	Power Supply	AQD1-4F1		SU
1	By Others	Card Reader		00
1	Access Control Panel	Axiom RC-2	Std	OT
1	ElectroLynx Harness	QC-C2500P (Cable Length 25.0')		MK
1	Wiring Diagrams	Wiring Diagrams (Elevations & Point to Point)	Std	SA

Notes:

REQUIRES 120VAC POWER TO POWER SUPPLY LOCATION BY ELECTRICAL CONTRACTOR.

REQUIRES LOW VOLTAGE FROM POWER SUPPLY TO ELECTRIC STRIKE CONTRACTOR.

REQUIRES LOW VOLTAGE AND COMMUNICATION WIRE BY ELECTRICAL CONTRACTOR.

REQUIRES CONDUIT TO BE SUPPLIED AND INSTALLED BY ELECTRICAL CONTRACTOR.

REQUIRES WIRE AND WIRE PULL BY ELECTRICAL CONTRACTOR.

MODE OF OPERATION:

CARD ACCESS. DOOR TO BE SECURED BY STOREROOM FUNCTION LOCK AT ALL TIMES.

ENTRY BY AUTHORIZED CARD OR KEY. ENTRY BY AUTHORIZED CARD WILL ACTIVATE ELECTRIC STRIKE FOR DOOR TO BE MANUALLY OPENED

STANDARD FUNCTIONALITY FOR DOOR CONTACTS AND REQUEST TO EXIT. LOCK HAS MECHANICAL KEY OVERRIDE. FREE EXIT AT ALL TIMES.

.29 Hardware Group 25.0

Pair 1905a, 1830 x 2134 x 45, Hollow Metal x Hollow Metal,

6	Hinge, Full Mortise, Hvy Wt	HTA786 127mm x 114mm	US26D	MK
2	Flush Bolt	555	US26D	RO
1	Dust Proof Strike	570	US26D	RO
1	Storeroom/Closet Lock	3 70 8204 LNL	US26D	SA
2	Permanent Core	1C72 x Kwy x Master Keyed	626	BE
(Supplied and Installed by Owner)				
2	Door Closer	1431 P10	EN	SA
2	Wall Stop	406 (Convex HD)	US32D	RO
1	Gasketing	S88BL x 3 Sides		PE
2	Sweep	18100CNB x Door Width		PE

.30 Hardware Group 26.0

Single 1905.1, 1220 x 2134 x 45, Hollow Metal x Hollow Metal,

3	Hinge, Full Mortise, Hvy Wt	HTA786 127mm x 114mm	US26D	MK
1	Storeroom/Closet Lock	3 70 8204 LNL	US26D	SA
1	Permanent Core	1C72 x Kwy x Master Keyed	626	BE
(Supplied and Installed by Owner)				
1	Door Closer	1431 P10	EN	SA
1	Wall Stop	406 (Convex HD)	US32D	RO
1	Gasketing	S88BL x 3 Sides		PE
1	Sweep	18100CNB x Door Width		PE

.31 Hardware Group 27.0

Pair 1905.2, 2336 x 2134 x 45, Hollow Metal x Hollow Metal,

6	Hinge, Full Mortise, Hvy Wt	H TA386 127mm x 114mm NRP	US26D	MK
1	Flush Bolt	2845	US26D	RO
1	Dust Proof Strike	570	US26D	RO
1	Storeroom/Closet Lock	3 23 70 8204 LNJ	US26D	SA
2	Permanent Core	1C72 x Kwy x Master Keyed	626	BE
(Supplied and Installed by Owner)				
2	Surface Closer	36 1431 PSH	EN	SA
1	Gasketing	290AS x 3 Sides		PE
1	Gasketing	S88BL x 3 Sides		PE
2	Sweep	3452CNB x Door Width		PE
1	Astragal	357SP x Door Height		PE

.32 **Hardware Group 28.0**

Single 5631, 965 x 2134 x 45, Wood x Aluminum,
Single 5655, 965 x 2134 x 45, Wood x Aluminum,

3	Hinge, Full Mortise, Hvy Wt	HTA786 127mm x 114mm	US26D	MK
1	Storeroom/Closet Lock	3 36 70 9204 BHW	US32D	SA
1	Permanent Core	1C72 x KwY x Master Keyed (Supplied and Installed by Owner)	626	BE
1	Electric Strike	1600-CS-LMS	630	HS
1	SMART Pac Bridge Rectifier	2005M3		HS
1	Concealed Overhead Holder/Stop	36 698H	US26D	SA
1	Surface Closer	36 1431 O	EN	SA
1	Gasketing	S88BL x 3 Sides		PE
1	Automatic Door Bottom	434ARL x Door Width x End Caps		PE
1	Position Switch	DPS-W-BK		SU
1	Power Supply	AQD1-4F1		SU
1	By Others	Card Reader		00
1	Access Control Panel	Axiom RC-2	Std	OT
1	ElectroLynx Harness	QC-C2500P (Cable Length 25.0')		MK
1	Wiring Diagrams	Wiring Diagrams (Elevations & Point to Point)	Std	SA

Notes:

REQUIRES 120VAC POWER TO POWER SUPPLY LOCATION BY ELECTRICAL CONTRACTOR.

REQUIRES LOW VOLTAGE FROM POWER SUPPLY TO ELECTRIC STRIKE CONTRACTOR.

REQUIRES LOW VOLTAGE AND COMMUNICATION WIRE BY ELECTRICAL CONTRACTOR.

REQUIRES CONDUIT TO BE SUPPLIED AND INSTALLED BY ELECTRICAL CONTRACTOR.

REQUIRES WIRE AND WIRE PULL BY ELECTRICAL CONTRACTOR.

MODE OF OPERATION:

CARD ACCESS. DOOR TO BE SECURED BY STOREROOM FUNCTION LOCK AT ALL TIMES.

ENTRY BY AUTHORIZED CARD OR KEY. ENTRY BY AUTHORIZED CARD WILL ACTIVATE ELECTRIC STRIKE FOR DOOR TO BE MANUALLY OPENED STANDARD FUNCTIONALITY FOR DOOR CONTACTS AND REQUEST TO EXIT. LOCK HAS MECHANICAL KEY OVERRIDE. FREE EXIT AT ALL TIMES.

.33 **Hardware Group 29.0**

.1 Unused.

.34 **Hardware Group 30.0**

.1 Unused.

.35 **Hardware Group 31.0**

.1 Unused.

.36 **Hardware Group 32.0**

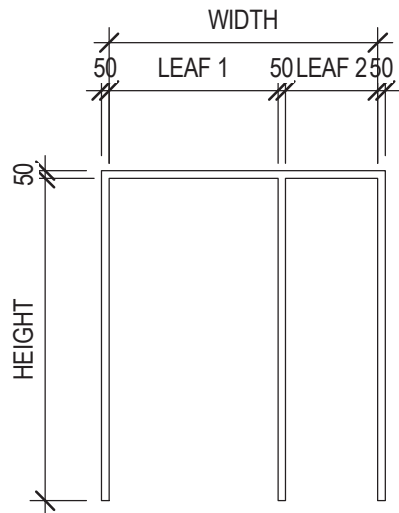
.1 Unused.

.37 **Hardware Group 33.0**

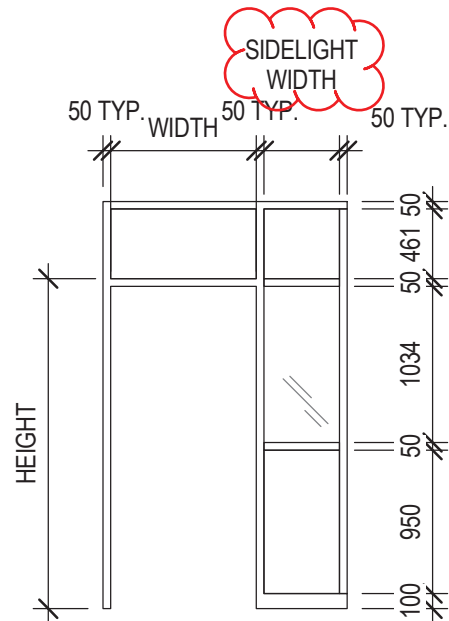
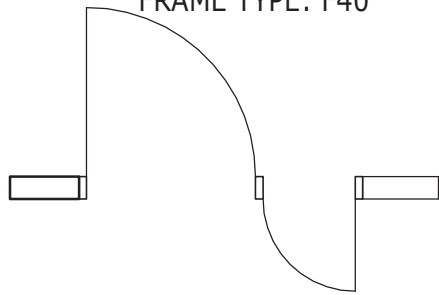
Single Misc, 915 x 2134 x 45, None x None,

5	Master Key	Master Keys	SA
5	Control Key	Construction Master Keys	SA
5	Master Key	Control Keys - Construction Cores	SA
5	Master Key	Control Keys - Permanent Cores	SA
2	Control Key	Extra Keys per Lock	SA
1	Master Key	Visual Keying (Cylinder and Keys)	SA

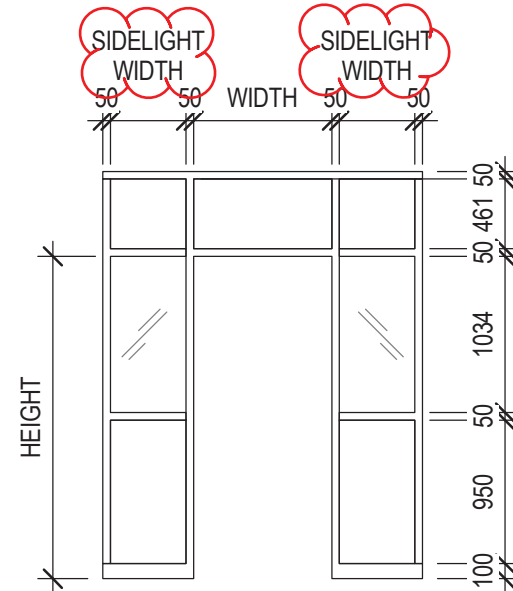
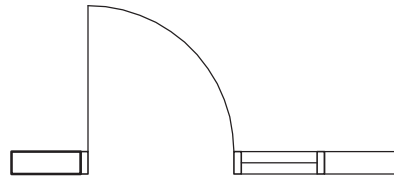
END OF SECTION



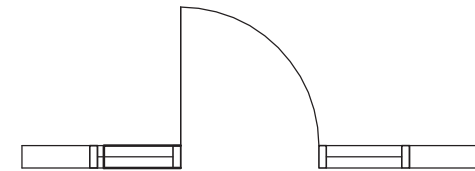
FRAME TYPE: F40



FRAME TYPE: F41



FRAME TYPE: F42



ISSUED FOR ADDENDUM # 2

COLES

Architecture + Engineering + Project Management
 Suite 201, 85 Fitzroy Street
 Charlottetown, P.E.I., Canada, C1A 1R6
 Phone: (902) 368-2300
 www.colesassociates.com



Client:
Health & Wellness

Project Title:
**Queen Elizabeth Hospital
 Mental Health & Addictions
 Emergency Department &
 Short Stay Unit**

Sheet Title:
DOOR FRAME TYPES

Date: 2022-04-06

Drn By: JR | Chk By: .

Project Number:
211025
 Drawing Number:
AD051r1

RESPONSIBILITY ABBREVIATIONS

OSOI OWNER SUPPLIED OWNER INSTALLED
 OSCI OWNER SUPPLIED CONTRACTOR INSTALLED
 OSVI OWNER SUPPLIED VENDER INSTALLED

CSCI CONTRACTOR SUPPLIED CONTRACTOR INSTALLED
 CSVI CONTRACTOR SUPPLIED VENDER INSTALLED

ACCESSORIES SCHEDULE ABBREVIATIONS

CCTK 20 CUBICLE CURTAIN AND TRACK, SAFETY

CVX-1 90 degree CONVEX MIRROR
 CVX-2 180 degree CONVEX MIRROR
 CVX-3 360 degree CONVEX MIRROR

GBH GLOVE BOX HOLDER, WALL MOUNTED

GRB-10a GRAB BAR, ANTI-LIGATURE (HORIZONTAL, 610mm)
 GRB-10b GRAB BAR, ANTI-LIGATURE (HORIZONTAL, 460mm)
 GRB-10e GRAB BAR, ANTI-LIGATURE (HORIZONTAL, 1067mm)
 GRB-11 GRAB BAR (HORIZONTAL, 610mm)
 GRB-13e GRAB BAR (VERTICAL, 1067mm)
 GRB-16b GRAB BAR, BARIATRIC (FOLD-DOWN)
 GRB-17 GRAB BAR (L-SHAPED, 760x760mm)
 GRB-17a GRAB BAR, ANTI-LIGATURE (L-SHAPED, 760x760mm)

HS-1 HAND SANITIZER, WALL MOUNTED
 HS-2 HAND SANITIZER, WALL MOUNTED, ANTI-LIGATURE

MIR-1 FRAMED MIRROR
 MIR-2 FRAMED MIRROR, SAFETY

PTD-1a PAPER TOWEL DISPENSER, WALL MOUNTED
 PTD-1b PAPER TOWEL DISPENSER, WALL MOUNTED
 PTD-1c PAPER TOWEL DISPENSER, WALL MOUNTED

PTD-2 PAPER TOWEL DISPENSER, RECESSED, ANTI-LIGATURE

RB-1 ROBE/COAT HOOK, ANTI-LIGATURE
 RB-2 ROBE/COAT HOOK, ANTI-LIGATURE, BARRIER FREE

SCTK 20 SHOWER CURTAIN AND TRACK, SAFETY

SD-1a SOAP DISPENSER, WALL MOUNTED
 SD-1b SOAP DISPENSER, WALL MOUNTED
 SD-1c SOAP DISPENSER, WALL MOUNTED
 SD-2 SOAP DISPENSER, WALL MOUNTED, ANTI-LIGATURE

SHD SHARPS DISPOSAL

SSH-1 SOAP SHAMPOO HOLDER (SHOWER SHELF), RECESSED

TPD-1 TOILET TISSUE DISPENSER, WITH SHELF, WALL MOUNTED
 TPD-2 TOILET DISPENSER, WALL MOUNTED, ANTI-LIGATURE
 TPD-2c TOILET ROLL HOLDER, RECESSED, ANTI-LIGATURE

WB1 WHITE BOARD
 WB1c WHITE BOARD
 WB2 WHITE BOARD
 WB3 WHITE BOARD
 WB4 WHITE BOARD IN SECURE WALL MOUNTED CABINET

ISSUED FOR ADDENDUM # 2

COLES

Architecture + Engineering + Project Management
 Suite 201, 85 Fitzroy Street
 Charlottetown, P.E.I., Canada, C1A 1R6
 Phone: (902) 368-2300
 www.colesassociates.com



PARKIN
 ARCHITECTS LIMITED

Client:
 Health & Wellness

Project Title:
 Queen Elizabeth Hospital
 Mental Health & Addictions
 Emergency Department &
 Short Stay Unit

Sheet Title:
 ACCESSORY
 SCHEDULE and
 RESPONSIBILITY
 ABBREVIATIONS

Date: 2022-04-06

Drn By: JR Chk By: .

Project Number:

211025

Drawing Number:

AD070r1

ACCESSORY SCHEDULE

Level	Const. Room Number	Room: Abbreviated Room Name	Accessory ID_Tag	Accessory Name	Qty.	Comments
FFL @ LEVEL 200	5600	CORR	HS-2	HAND SANITIZER, Anti-Ligature	1	CSCI
FFL @ LEVEL 200	5601	WC	GRB-10b	GRAB BAR, ANTI-LIGATURE, HORIZONTAL	1	CSCI
FFL @ LEVEL 200	5601	WC	GRB-17a	ANTI-LIGATURE GRAB BAR	1	CSCI
FFL @ LEVEL 200	5601	WC	MIR-2	Mirror - Safety, Above Sink	1	CSCI
FFL @ LEVEL 200	5601	WC	PTD-2	RECESSED PAPER TOWEL DISPENSER	1	CSCI
FFL @ LEVEL 200	5601	WC	RH-1	Robe Hook Anti-Ligature	1	CSCI
FFL @ LEVEL 200	5601	WC	RH-2	Robe Hook Anti-Ligature, Barrier-Free	1	CSCI
FFL @ LEVEL 200	5601	WC	SD-2	SOAP DISPENSER_ ANTI-LIGATURE	1	CSCI
FFL @ LEVEL 200	5601	WC	TPD-2	DUAL TOILET PAPER HOLDER - ANTI-LIGATURE	1	CSCI
FFL @ LEVEL 200	5602	SECURITY	HS-2	HAND SANITIZER, Anti-Ligature	1	CSCI
FFL @ LEVEL 200	5602	SECURITY	RH-1	Robe Hook Anti-Ligature	1	CSCI
FFL @ LEVEL 200	5602	SECURITY	RH-2	Robe Hook Anti-Ligature, Barrier-Free	1	CSCI
FFL @ LEVEL 200	5602	SECURITY	WB1	MAGNETIC WHITEBOARD	1	CSCI
FFL @ LEVEL 200	5610	CORR	CVX-2	180° Convex Mirror	1	CSCI
FFL @ LEVEL 200	5611	WAITING	CVX-1	90° Convex Mirror	1	CSCI
FFL @ LEVEL 200	5611	WAITING	CVX-2	180° Convex Mirror	1	CSCI
FFL @ LEVEL 200	5611	WAITING	HS-2	HAND SANITIZER, Anti-Ligature	1	CSCI
FFL @ LEVEL 200	5611	WAITING	WB-4	MAGNETIC WHITEBOARD IN GLASS CASE	1	CSCI
FFL @ LEVEL 200	5611A	LOCKERS	CVX-2	180° Convex Mirror	1	CSCI
FFL @ LEVEL 200	5611A	LOCKERS	RH-1	Robe Hook Anti-Ligature	1	CSCI
FFL @ LEVEL 200	5611A	LOCKERS	RH-2	Robe Hook Anti-Ligature, Barrier-Free	1	CSCI
FFL @ LEVEL 200	5612	WARD CLERK	RH-1	Robe Hook Anti-Ligature	1	CSCI
FFL @ LEVEL 200	5612	WARD CLERK	RH-2	Robe Hook Anti-Ligature, Barrier-Free	1	CSCI
FFL @ LEVEL 200	5612	WARD CLERK	WB1	MAGNETIC WHITEBOARD	1	CSCI
FFL @ LEVEL 200	5615	FAMILY CONSULT	HS-1	HAND SANITIZER	1	OSCI
FFL @ LEVEL 200	5615	FAMILY CONSULT	RH-1	Robe Hook Anti-Ligature	1	CSCI
FFL @ LEVEL 200	5615	FAMILY CONSULT	RH-2	Robe Hook Anti-Ligature	1	CSCI
FFL @ LEVEL 200	5620	CORR	CVX-2	180° Convex Mirror	1	CSCI
FFL @ LEVEL 200	5620	CORR	PTD-1	SURF. MTD. PAPER TOWEL DISPENSER	1	OSCI
FFL @ LEVEL 200	5620	CORR	SD-1	SOAP DISPENSER	1	OSCI

ISSUED FOR ADDENDUM # 2

COLES
 Architecture + Engineering + Project Management
 Suite 201, 85 Fitzroy Street
 Charlottetown, P.E.I., Canada, C1A 1R6
 Phone: (902) 368-2300
 www.colesassociates.com



PARKIN
 ARCHITECTS LIMITED

Client:
Health & Wellness

Project Title:
**Queen Elizabeth Hospital
 Mental Health & Addictions
 Emergency Department &
 Short Stay Unit**

Sheet Title:
**ACCESSORY
 SCHEDULE**

Date: 2022-04-06
 Drn By: JR Chk By: .
 Project Number:
211025
 Drawing Number:
AD071r1

ACCESSORY SCHEDULE_02

Level	Const. Room Number	Room: Abbreviated Room Name	Accessory ID_Tag	Accessory Name	Qty.	Comments
FFL @ LEVEL 200	5621	SHORT STAY	MIR-2	Mirror - Safety, Above Sink	1	CSCI
FFL @ LEVEL 200	5621	SHORT STAY	RH-1	Robe Hook Anti-Ligature	1	CSCI
FFL @ LEVEL 200	5621	SHORT STAY	RH-2	Robe Hook Anti-Ligature, Barrier-Free	1	CSCI
FFL @ LEVEL 200	5621	SHORT STAY	WB1	MAGNETIC WHITEBOARD	1	CSCI
FFL @ LEVEL 200	5623	SHORT STAY	MIR-2	Mirror - Safety, Above Sink	1	CSCI
FFL @ LEVEL 200	5623	SHORT STAY	RH-1	Robe Hook Anti-Ligature	1	CSCI
FFL @ LEVEL 200	5623	SHORT STAY	RH-2	Robe Hook Anti-Ligature, Barrier-Free	1	CSCI
FFL @ LEVEL 200	5623	SHORT STAY	WB1	MAGNETIC WHITEBOARD	1	CSCI
FFL @ LEVEL 200	5625	BRTC WC	GRB-10a	GRAB BAR, ANTI-LIGATURE, HORIZONTAL	1	CSCI
FFL @ LEVEL 200	5625	BRTC WC	GRB-16b	GRAB BAR, FOLD DOWN, ANTI-LIGATURE	2	CSCI
FFL @ LEVEL 200	5625	BRTC WC	PTD-2	RECESSED PAPER TOWEL DISPENSER	1	CSCI
FFL @ LEVEL 200	5625	BRTC WC	RH-1	Robe Hook Anti-Ligature	1	CSCI
FFL @ LEVEL 200	5625	BRTC WC	RH-2	Robe Hook Anti-Ligature, Barrier-Free	1	CSCI
FFL @ LEVEL 200	5625	BRTC WC	SD-2	SOAP DISPENSER_ANTI-LIGATURE	1	CSCI
FFL @ LEVEL 200	5625	BRTC WC	TPD-2	DUAL TOILET PAPER HOLDER - ANTI-LIGATURE	1	CSCI
FFL @ LEVEL 200	5626	SHORT STAY	MIR-2	Mirror - Safety, Above Sink	1	CSCI
FFL @ LEVEL 200	5626	SHORT STAY	RH-1	Robe Hook Anti-Ligature	1	CSCI
FFL @ LEVEL 200	5626	SHORT STAY	RH-2	Robe Hook Anti-Ligature, Barrier-Free	1	CSCI
FFL @ LEVEL 200	5626	SHORT STAY	WB1	MAGNETIC WHITEBOARD	1	CSCI
FFL @ LEVEL 200	5627	SHORT STAY	MIR-2	Mirror - Safety, Above Sink	1	CSCI
FFL @ LEVEL 200	5627	SHORT STAY	RH-1	Robe Hook Anti-Ligature	1	CSCI
FFL @ LEVEL 200	5627	SHORT STAY	RH-2	Robe Hook Anti-Ligature, Barrier-Free	1	CSCI
FFL @ LEVEL 200	5627	SHORT STAY	WB1	MAGNETIC WHITEBOARD	1	CSCI
FFL @ LEVEL 200	5628A	KITCHENETTE	CVX-2	180° Convex Mirror	1	CSCI
FFL @ LEVEL 200	5628A	KITCHENETTE	PTD-2	RECESSED PAPER TOWEL DISPENSER	1	CSCI
FFL @ LEVEL 200	5628A	KITCHENETTE	SD-2	SOAP DISPENSER_ANTI-LIGATURE	1	CSCI
FFL @ LEVEL 200	5628B	LOUNGE	WB3	MAGNETIC WHITEBOARD	1	CSCI
FFL @ LEVEL 200	5630	CORR	CCTK 20	CUBICLE CURTAIN & CURTAIN TRACK - SAFETY	2	CSCI
FFL @ LEVEL 200	5630	CORR	HS-2	HAND SANITIZER, Anti-Ligature	2	CSCI
FFL @ LEVEL 200	5631	CHARTING	HS-1	HAND SANITIZER	1	CSCI
FFL @ LEVEL 200	5631	CHARTING	WB1	MAGNETIC WHITEBOARD	1	CSCI
FFL @ LEVEL 200	5632	RECLINER	CVX-1	90° Convex Mirror	1	CSCI
FFL @ LEVEL 200	5632	RECLINER	HS-2	HAND SANITIZER, Anti-Ligature	1	CSCI

ISSUED FOR ADDENDUM # 2

COLES
 Architecture + Engineering + Project Management
 Suite 201, 85 Fitzroy Street
 Charlottetown, P.E.I., Canada, C1A 1R6
 Phone: (902) 368-2300
 www.colesassociates.com



PARKIN
 ARCHITECTS LIMITED

Client:
Health & Wellness

Project Title:
**Queen Elizabeth Hospital
 Mental Health & Addictions
 Emergency Department &
 Short Stay Unit**

Sheet Title:
**ACCESSORY
 SCHEDULE**

Date: 2022-04-06

Drn By: JR Chk By: .

Project Number:

211025

Drawing Number:

AD072r1

ACCESSORY SCHEDULE_03

Level	Const. Room Number	Room: Abbreviated Room Name	Accessory ID_Tag	Accessory Name	Qty.	Comments
FFL @ LEVEL 200	5633	WC	GRB-10b	GRAB BAR, ANTI-LIGATURE, HORIZONTAL	1	CSCI
FFL @ LEVEL 200	5633	WC	GRB-17a	ANTI-LIGATURE GRAB BAR	1	CSCI
FFL @ LEVEL 200	5633	WC	MIR-2	Mirror - Safety, Above Sink	1	CSCI
FFL @ LEVEL 200	5633	WC	PTD-2	RECESSED PAPER TOWEL DISPENSER	1	CSCI
FFL @ LEVEL 200	5633	WC	RH-1	Robe Hook Anti-Ligature	1	CSCI
FFL @ LEVEL 200	5633	WC	RH-2	Robe Hook Anti-Ligature, Barrier-Free	1	CSCI
FFL @ LEVEL 200	5633	WC	SD-2	SOAP DISPENSER_ANTI-LIGATURE	1	CSCI
FFL @ LEVEL 200	5633	WC	TPD-2	DUAL TOILET PAPER HOLDER - ANTI-LIGATURE	1	CSCI
FFL @ LEVEL 200	5634	RECLINER	CVX-1	90° Convex Mirror	1	CSCI
FFL @ LEVEL 200	5634	RECLINER	HS-2	HAND SANITIZER, Anti-Ligature	1	CSCI
FFL @ LEVEL 200	5636	EXAM	CCTK 20	CUBICLE CURTAIN & CURTAIN TRACK - SAFETY	1	CSCI
FFL @ LEVEL 200	5636	EXAM	GBH-1	Glove Box Holder	1	OSCI
FFL @ LEVEL 200	5636	EXAM	HS-2	HAND SANITIZER, Anti-Ligature	1	CSCI
FFL @ LEVEL 200	5636	EXAM	PTD-1	SURF. MTD. PAPER TOWEL DISPENSER	1	OSCI
FFL @ LEVEL 200	5636	EXAM	SD-1	SOAP DISPENSER	1	OSCI
FFL @ LEVEL 200	5636	EXAM	SHD	SHARPS DISPOSAL	1	OSCI
FFL @ LEVEL 200	5637	SHOWER	GRB-10b	GRAB BAR, ANTI-LIGATURE, HORIZONTAL	1	CSCI
FFL @ LEVEL 200	5637	SHOWER	GRB-10e	GRAB BAR, ANTI-LIGATURE, HORIZONTAL	1	CSCI
FFL @ LEVEL 200	5637	SHOWER	GRB-13e	GRAB BAR, ANTI-LIGATURE, VERTICAL	1	CSCI
FFL @ LEVEL 200	5637	SHOWER	RH-1	Robe Hook Anti-Ligature	1	CSCI
FFL @ LEVEL 200	5637	SHOWER	RH-2	Robe Hook Anti-Ligature, Barrier-Free	1	CSCI
FFL @ LEVEL 200	5637	SHOWER	SCTK 20	Shower Curtain Track - Safety	1	CSCI
FFL @ LEVEL 200	5637	SHOWER	SSH-1	RECESSED SHOWER SHELF_ANTI-LIGATURE	1	CSCI
FFL @ LEVEL 200	5638	MEETING RM		TV Wall Support	1	OSVI
FFL @ LEVEL 200	5638	MEETING RM	HS-2	HAND SANITIZER, Anti-Ligature	1	CSCI
FFL @ LEVEL 200	5638	MEETING RM	WB3	MAGNETIC WHITEBOARD	2	CSCI
FFL @ LEVEL 200	5639	TELEHEALTH/ PSYCH OFFICE	RH-1	Robe Hook Anti-Ligature	2	CSCI
FFL @ LEVEL 200	5640	CORR	HS-1	HAND SANITIZER	1	OSCI
FFL @ LEVEL 200	5640	CORR	WB3	MAGNETIC WHITEBOARD	1	CSCI
FFL @ LEVEL 200	5641A	PT BELONG	GBH-1	GLOVE BOX HOLDER	1	OSCI
FFL @ LEVEL 200	5644	STAFF LOCKERS	WB3	MAGNETIC WHITEBOARD	1	CSCI
FFL @ LEVEL 200	5645	CORR	HS-1	HAND SANITIZER	1	OSCI

ISSUED FOR ADDENDUM # 2

COLES
 Architecture + Engineering + Project Management
 Suite 201, 85 Fitzroy Street
 Charlottetown, P.E.I., Canada, C1A 1R6
 Phone: (902) 368-2300
 www.colesassociates.com



PARKIN
 ARCHITECTS LIMITED

Client:
Health & Wellness

Project Title:
**Queen Elizabeth Hospital
 Mental Health & Addictions
 Emergency Department &
 Short Stay Unit**

Sheet Title:
**ACCESSORY
 SCHEDULE**

Date: 2022-04-06
 Drn By: JR Chk By: .
 Project Number:
211025
 Drawing Number:
AD073r1

ACCESSORY SCHEDULE_04

Level	Const. Room Number	Room: Abbreviated Room Name	Accessory ID_Tag	Accessory Name	Qty.	Comments
FFL @ LEVEL 200	5646	SOILED	GBH-1	Glove Box Holder	1	OSCI
FFL @ LEVEL 200	5646	SOILED	HS-1	HAND SANITIZER	1	OSCI
FFL @ LEVEL 200	5646	SOILED	PTD-1	SURF. MTD. PAPER TOWEL DISPENSER	2	OSCI
FFL @ LEVEL 200	5646	SOILED	SD-1	SOAP DISPENSER	2	OSCI
FFL @ LEVEL 200	5650	CORR	CVX-1	90° Convex Mirror	1	CSCI
FFL @ LEVEL 200	5650	CORR	CVX-2	180° Convex Mirror	1	CSCI
FFL @ LEVEL 200	5651	MULTIPURPOSE OFFICE	RH-1	Robe Hook Anti-Ligature	1	CSCI
FFL @ LEVEL 200	5651	MULTIPURPOSE OFFICE	RH-2	Robe Hook Anti-Ligature, Barrier-Free	1	CSCI
FFL @ LEVEL 200	5651	MULTIPURPOSE OFFICE	WB1	MAGNETIC WHITEBOARD	1	CSCI
FFL @ LEVEL 200	5652	ASSESS / INTERVIEW	RH-1	Robe Hook Anti-Ligature	1	CSCI
FFL @ LEVEL 200	5652	ASSESS / INTERVIEW	RH-2	Robe Hook Anti-Ligature, Barrier-Free	1	CSCI
FFL @ LEVEL 200	5653	ASSESS/INTERVIEW	RH-1	Robe Hook Anti-Ligature	1	CSCI
FFL @ LEVEL 200	5653	ASSESS/INTERVIEW	RH-2	Robe Hook Anti-Ligature	1	CSCI
FFL @ LEVEL 200	5655	CHARTING	HS-1	HAND SANITIZER	1	OSCI
FFL @ LEVEL 200	5655	CHARTING	WB1	MAGNETIC WHITEBOARD	1	CSCI
FFL @ LEVEL 200	5656	BRTC WC	GRB-10a	GRAB BAR, ANTI-LIGATURE, HORIZONTAL	1	CSCI
FFL @ LEVEL 200	5656	BRTC WC	GRB-16b	GRAB BAR, FOLD DOWN, ANTI-LIGATURE	2	CSCI
FFL @ LEVEL 200	5656	BRTC WC	MIR-2	Mirror - Safety, Above Sink	1	CSCI
FFL @ LEVEL 200	5656	BRTC WC	PTD-2	RECESSED PAPER TOWEL DISPENSER	1	CSCI
FFL @ LEVEL 200	5656	BRTC WC	RH-1	Robe Hook Anti-Ligature	1	CSCI
FFL @ LEVEL 200	5656	BRTC WC	RH-2	Robe Hook Anti-Ligature, Barrier-Free	1	CSCI
FFL @ LEVEL 200	5656	BRTC WC	SD-2	SOAP DISPENSER ANTI-LIGATURE	1	CSCI
FFL @ LEVEL 200	5656	BRTC WC	TPD-2	DUAL TOILET PAPER HOLDER - ANTI-LIGATURE	1	CSCI
FFL @ LEVEL 200	5658	HSKPNG	GBH-1	Glove Box Holder	1	OSCI
FFL @ LEVEL 200	5658	HSKPNG	WB1	MAGNETIC WHITEBOARD	1	CSCI
FFL @ LEVEL 200	5659	STORAGE	WB1	MAGNETIC WHITEBOARD	1	CSCI
FFL @ LEVEL 200	5660	CORR	CVX-2	180° Convex Mirror	1	CSCI
FFL @ LEVEL 200	5660	CORR	HS-2	HAND SANITIZER, Anti-Ligature	2	CSCI
FFL @ LEVEL 200	5660	CORR	PTD-1	SURF. MTD. PAPER TOWEL DISPENSER	1	OSCI
FFL @ LEVEL 200	5660	CORR	SD-1	SOAP DISPENSER	1	OSCI

ISSUED FOR ADDENDUM # 2

COLES
 Architecture + Engineering + Project Management
 Suite 201, 85 Fitzroy Street
 Charlottetown, P.E.I., Canada, C1A 1R6
 Phone: (902) 368-2300
 www.colesassociates.com



PARKIN
 ARCHITECTS LIMITED

Client:
Health & Wellness

Project Title:
**Queen Elizabeth Hospital
 Mental Health & Addictions
 Emergency Department &
 Short Stay Unit**



Sheet Title:
**ACCESSORY
 SCHEDULE**

Date: 2022-04-06
 Drn By: JR Chk By: .
 Project Number:
211025
 Drawing Number:
AD074r1

ACCESSORY SCHEDULE_05

Level	Const. Room Number	Room: Abbreviated Room Name	Accessory ID_Tag	Accessory Name	Qty.	Comments
FFL @ LEVEL 200	5661	WC	GRB-10b	GRAB BAR, ANTI-LIGATURE, HORIZONTAL	1	CSCI
FFL @ LEVEL 200	5661	WC	GRB-17a	ANTI-LIGATURE GRAB BAR	1	CSCI
FFL @ LEVEL 200	5661	WC	MIR-2	Mirror - Safety, Above Sink	1	CSCI
FFL @ LEVEL 200	5661	WC	PTD-2	RECESSED PAPER TOWEL DISPENSER	1	CSCI
FFL @ LEVEL 200	5661	WC	RH-1	Robe Hook Anti-Ligature	1	CSCI
FFL @ LEVEL 200	5661	WC	RH-2	Robe Hook Anti-Ligature, Barrier-Free	1	CSCI
FFL @ LEVEL 200	5661	WC	SD-2	SOAP DISPENSER_ANTI-LIGATURE	1	CSCI
FFL @ LEVEL 200	5661	WC	TPD-2	DUAL TOILET PAPER HOLDER - ANTI-LIGATURE	1	CSCI
FFL @ LEVEL 200	5662	ASSESS/INTERVIEW	RH-1	Robe Hook Anti-Ligature	1	CSCI
FFL @ LEVEL 200	5662	ASSESS/INTERVIEW	RH-2	Robe Hook Anti-Ligature	1	CSCI
FFL @ LEVEL 200	5663	ASSESS/INTERVIEW	RH-1	Robe Hook Anti-Ligature	1	CSCI
FFL @ LEVEL 200	5663	ASSESS/INTERVIEW	RH-2	Robe Hook Anti-Ligature	1	CSCI
FFL @ LEVEL 200	5664C	WC	GRB-10b	GRAB BAR, ANTI-LIGATURE, HORIZONTAL	1	CSCI
FFL @ LEVEL 200	5664C	WC	GRB-17a	ANTI-LIGATURE GRAB BAR	1	CSCI
FFL @ LEVEL 200	5664C	WC	MIR-2	Mirror - Safety, Above Sink	1	CSCI
FFL @ LEVEL 200	5664C	WC	PTD-2	RECESSED PAPER TOWEL DISPENSER	1	CSCI
FFL @ LEVEL 200	5664C	WC	SD-2	SOAP DISPENSER_ANTI-LIGATURE	1	CSCI
FFL @ LEVEL 200	5664C	WC	TPD-2c	TOILET PAPER DISPENSER_ANTI LIGATURE	1	CSCI
FFL @ LEVEL 200	5667	ASSESS/INTERVIEW	RH-1	Robe Hook Anti-Ligature	1	CSCI
FFL @ LEVEL 200	5667	ASSESS/INTERVIEW	RH-2	Robe Hook Anti-Ligature	1	CSCI
FFL @ LEVEL 200	5668	ASSESS/INTERVIEW	RH-1	Robe Hook Anti-Ligature	1	CSCI
FFL @ LEVEL 200	5668	ASSESS/INTERVIEW	RH-2	Robe Hook Anti-Ligature	1	CSCI
FFL @ LEVEL 200	5669	ASSESS/INTERVIEW	RH-1	Robe Hook Anti-Ligature	1	CSCI
FFL @ LEVEL 200	5669	ASSESS/INTERVIEW	RH-2	Robe Hook Anti-Ligature	1	CSCI
FFL @ LEVEL 200	5670	CORR	HS-1	HAND SANITIZER	2	OSCI
FFL @ LEVEL 200	5670	CORR	PTD-1	SURF. MTD. PAPER TOWEL DISPENSER	1	OSCI
FFL @ LEVEL 200	5670	CORR	SD-1	SOAP DISPENSER	1	OSCI
FFL @ LEVEL 200	5672	OBSERVATION	WB1	MAGNETIC WHITEBOARD	1	CSCI
FFL @ LEVEL 200	5672	OBSERVATION	WB2	Magnetic Whiteboard	4	CSCI

ISSUED FOR ADDENDUM # 2

 <p>Architecture + Engineering + Project Management Suite 201, 85 Fitzroy Street Charlottetown, P.E.I., Canada, C1A 1R6 Phone: (902) 368-2300 www.colesassociates.com</p>		Client: Health & Wellness	Sheet Title: ACCESSORY SCHEDULE	Date: 2022-04-06
		Project Title: Queen Elizabeth Hospital Mental Health & Addictions Emergency Department & Short Stay Unit		Drn By: JR Chk By: .

ACCESSORY SCHEDULE_06

Level	Const. Room Number	Room: Abbreviated Room Name	Accessory ID_Tag	Accessory Name	Qty.	Comments
FFL @ LEVEL 200	5673	ST WC	GRB 11	Horizontal Barrier Free Grab Bar	1	CSCI
FFL @ LEVEL 200	5673	ST WC	GRB 17	L Shaped Barrier Free Grab Bar	1	CSCI
FFL @ LEVEL 200	5673	ST WC	MIR 1	Framed Mirror	1	CSCI
FFL @ LEVEL 200	5673	ST WC	PTD-1c	SURF. MTD. PAPER TOWEL DISPENSER	1	OSCI
FFL @ LEVEL 200	5673	ST WC	RH-1	Robe Hook Anti-Ligature	1	CSCI
FFL @ LEVEL 200	5673	ST WC	RH-2	Robe Hook Anti-Ligature, Barrier-Free	1	CSCI
FFL @ LEVEL 200	5673	ST WC	SD-1	SOAP DISPENSER	1	OSCI
FFL @ LEVEL 200	5673	ST WC	TPD-1	TISSUE DISPENSER W/ UTILITY SHELF	1	OSCI
FFL @ LEVEL 200	5674	MED RM	GBH-1	Glove Box Holder	1	OSCI
FFL @ LEVEL 200	5674	MED RM	HS-1	HAND SANITIZER	1	OSCI
FFL @ LEVEL 200	5674	MED RM	PTD-1	SURF. MTD. PAPER TOWEL DISPENSER	2	OSCI
FFL @ LEVEL 200	5674	MED RM	SD-1	SOAP DISPENSER	2	OSCI
FFL @ LEVEL 200	5674	MED RM	SHD	SHARPS DISPOSAL	1	OSCI
FFL @ LEVEL 200	5674	MED RM	WB1b	MAGNETIC WHITEBOARD	1	CSCI
FFL @ LEVEL 200	5676	ST WC	GRB 11	Horizontal Barrier Free Grab Bar	1	CSCI
FFL @ LEVEL 200	5676	ST WC	GRB 17	L Shaped Barrier Free Grab Bar	1	CSCI
FFL @ LEVEL 200	5676	ST WC	MIR 1	Framed Mirror	1	CSCI
FFL @ LEVEL 200	5676	ST WC	PTD-1c	SURF. MTD. PAPER TOWEL DISPENSER	1	OSCI
FFL @ LEVEL 200	5676	ST WC	RH-1	Robe Hook Anti-Ligature	1	CSCI
FFL @ LEVEL 200	5676	ST WC	RH-2	Robe Hook Anti-Ligature, Barrier-Free	1	CSCI
FFL @ LEVEL 200	5676	ST WC	SD-1	SOAP DISPENSER	1	OSCI
FFL @ LEVEL 200	5676	ST WC	TPD-1	TISSUE DISPENSER W/ UTILITY SHELF	1	OSCI
FFL @ LEVEL 200	5677	TEAM ROOM		TV Wall Support	1	OSVI
FFL @ LEVEL 200	5677	TEAM ROOM	PTD-1	SURF. MTD. PAPER TOWEL DISPENSER	1	OSCI
FFL @ LEVEL 200	5677	TEAM ROOM	SD-1	SOAP DISPENSER	1	OSCI
FFL @ LEVEL 200	5677	TEAM ROOM	WB3	MAGNETIC WHITEBOARD	2	CSCI

ISSUED FOR ADDENDUM # 2

COLES
 Architecture + Engineering + Project Management
 Suite 201, 85 Fitzroy Street
 Charlottetown, P.E.I., Canada, C1A 1R6
 Phone: (902) 368-2300
 www.colesassociates.com



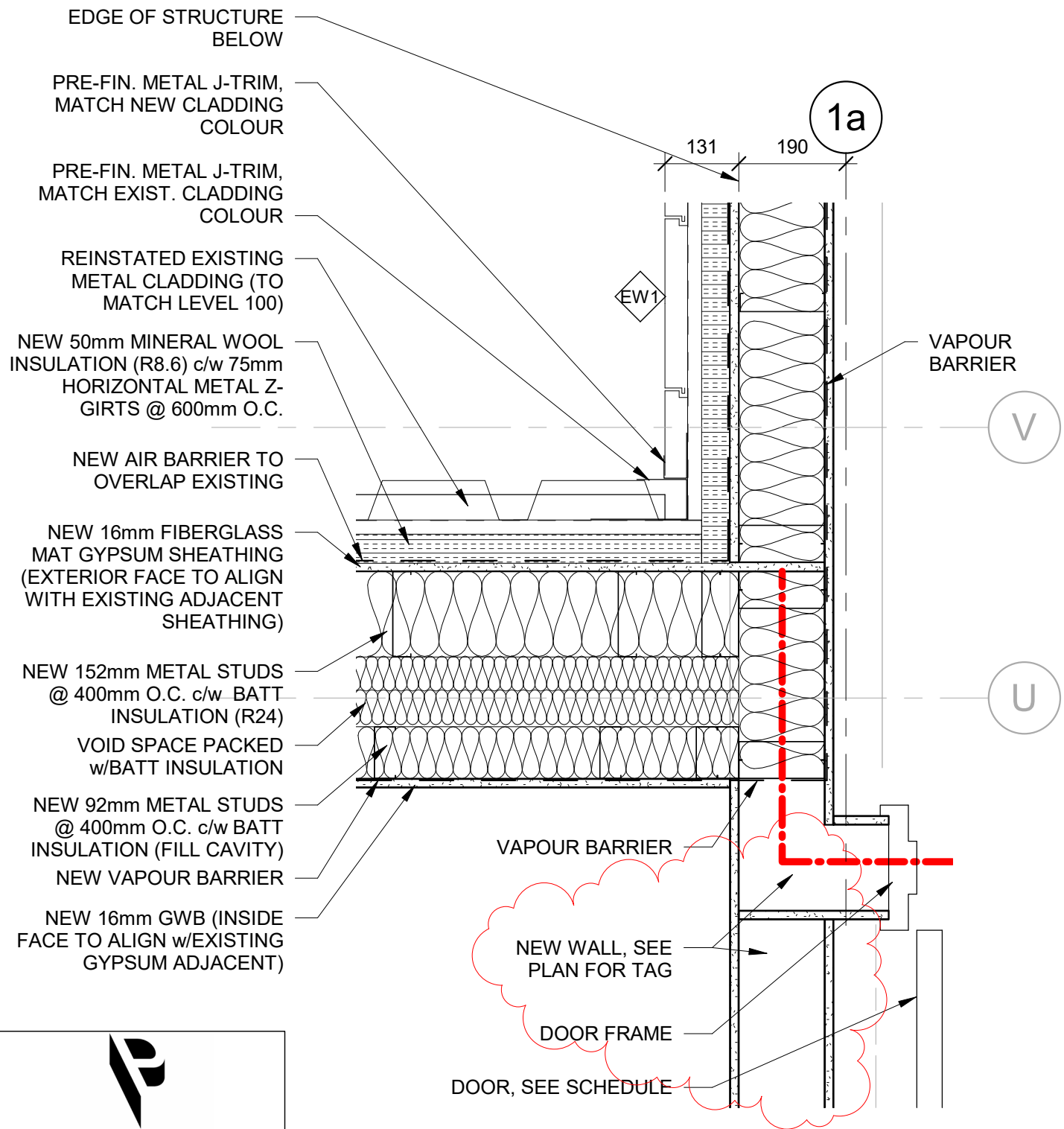
PARKIN
 ARCHITECTS LIMITED

Client:
Health & Wellness

Project Title:
**Queen Elizabeth Hospital
 Mental Health & Addictions
 Emergency Department &
 Short Stay Unit**

Sheet Title:
**ACCESSORY
 SCHEDULE**

Date: 02/28/22
 Drn By: Author | Chk By: Checker
 Project Number:
211025
 Drawing Number:
AD076

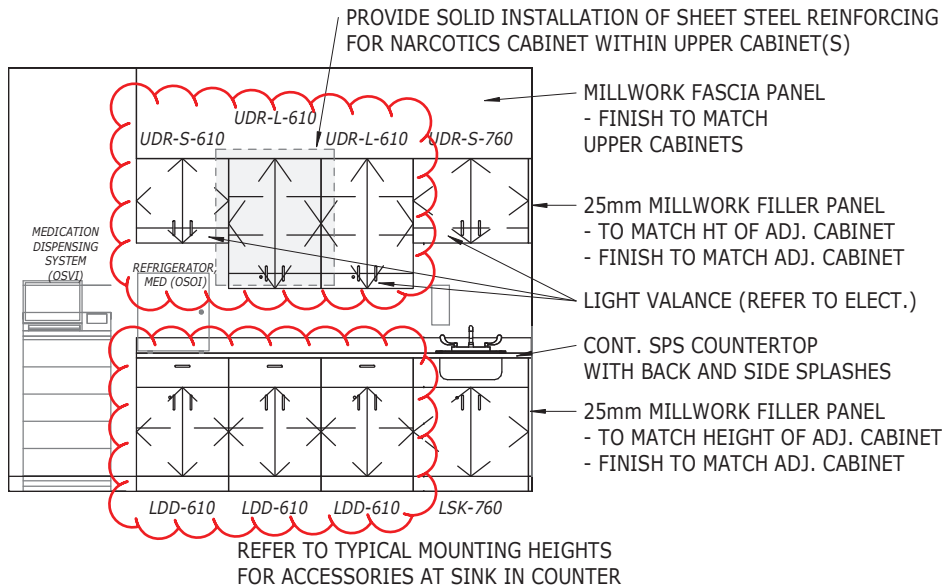


COLES
 Architecture + Engineering + Project Management
 Suite 201, 85 Fitzroy Street
 Charlottetown, P.E.I., Canada, C1A 1R6
 Phone: (902) 368-2300
 www.colesassociates.com

Client: Health & Wellness
 Project Title: Queen Elizabeth Hospital
 Mental Health & Addictions
 Emergency Department &
 Short Stay Unit

Sheet Title: Connection Detail @
 Existing Wall (GL-1a &
 GL-U) and Adjacent
 Window Infill

Issued for Addendum #2
 Date: 2022-04-06 Scale: 1 : 10
 Drn By: ADR Chk By: SDM
 Project Number: 211025
 Drawing Number: AD100r1



NOTE: PROVIDE LOCKS FOR ALL MILLWORK DOOR SETS AND DRAWERS.



TO BE READ IN CONJUNCTION WITH DRAWING 211025-2d/A503.

COLES
Architecture + Engineering + Project Management
Suite 201, 85 Fitzroy Street
Charlottetown, P.E.I., Canada, C1A 1R6
Phone: (902) 368-2300
www.colesassociates.com

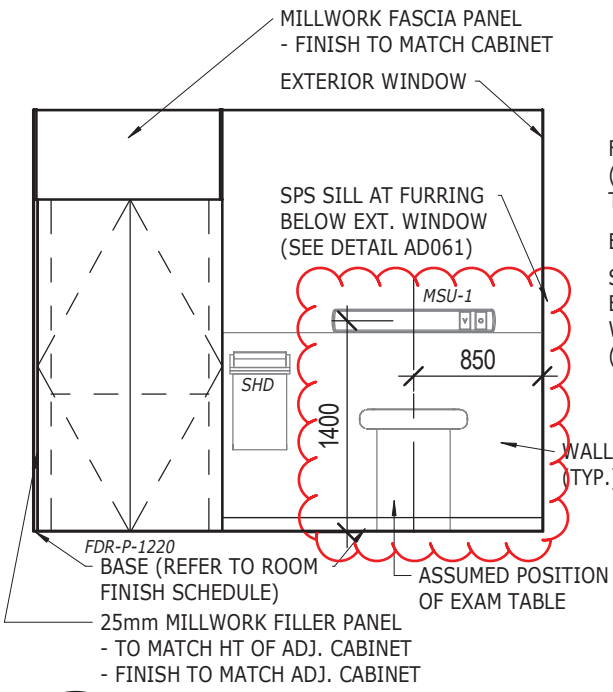
Client:
Health & Wellness

Project Title:
**Queen Elizabeth Hospital
Mental Health & Addictions
Emergency Department &
Short Stay Unit**

Sheet Title:
**REVISED CABINET
SIZES IN MEDICATION
ROOM 5674**

- ISSUED WITH ADD. #2

Date: APR. 5/22	Scale: 1 : 50
Drn By: JR	Chk By: .
Project Number: 211025	
Drawing Number: ASK-001	

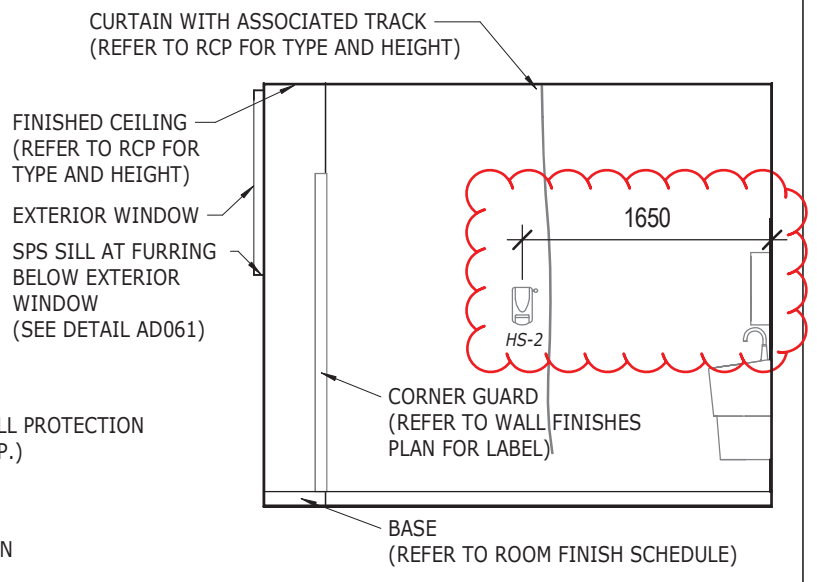


2

EXAM - NORTH

1 : 50

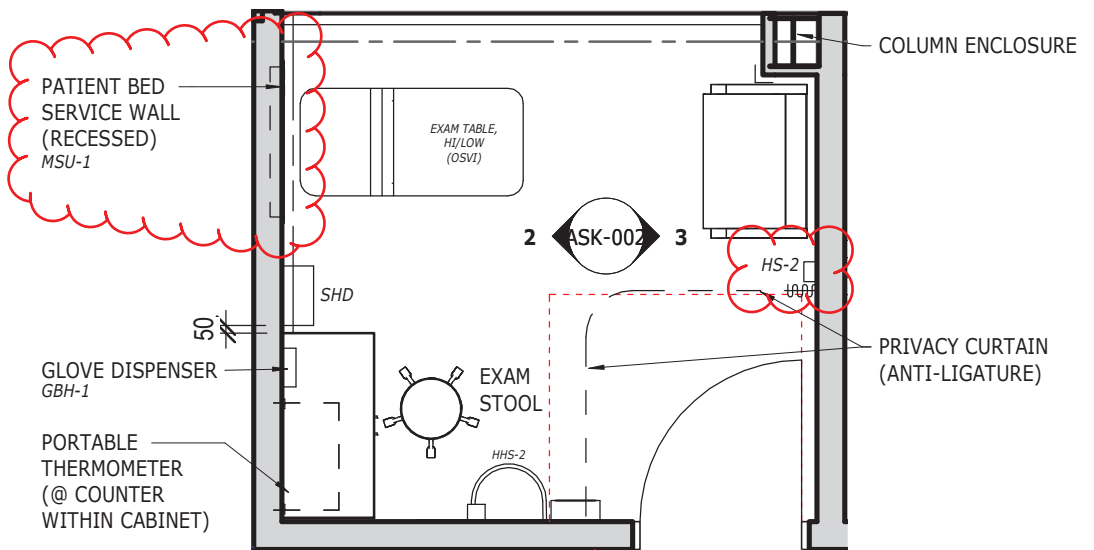
NOTE: PROVIDE MILLWORK CABINET
DOOR LOCK (SEE "FDR-P" DETAIL ON A605)



3

EXAM - SOUTH

1 : 50



1

EXAM 5636 - FLOOR PLAN

1 : 50



PARKIN
ARCHITECTS LIMITED

COLES

Architecture + Engineering + Project Management
Suite 201, 85 Fitzroy Street
Charlottetown, P.E.I., Canada, C1A 1R6
Phone: (902) 368-2300
www.colesassociates.com

Client:
Health & Wellness

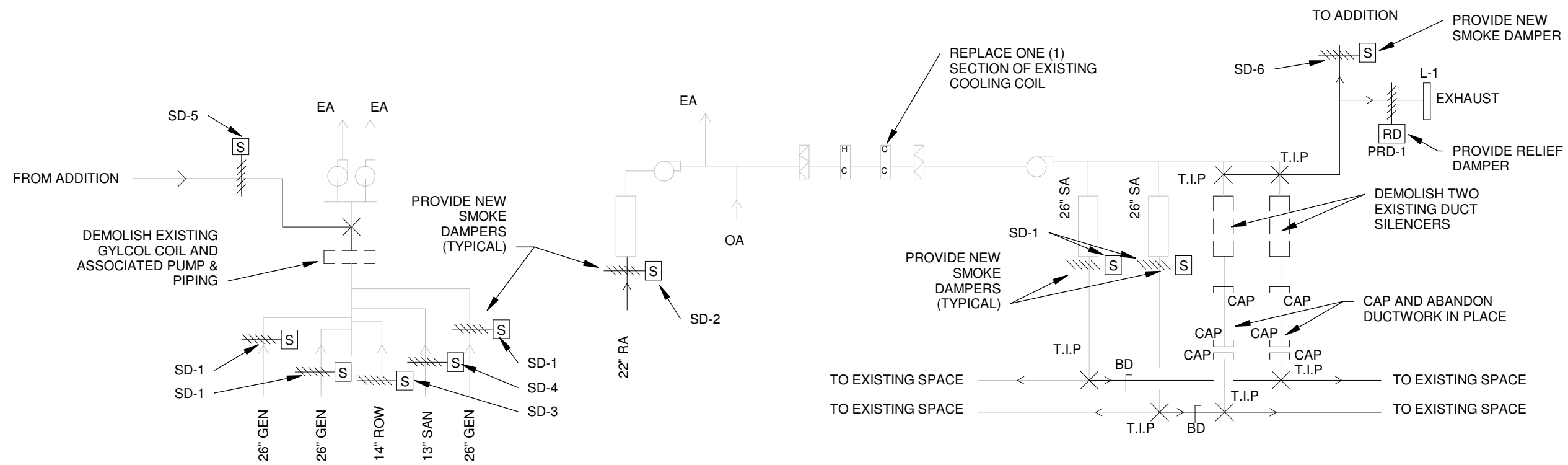
Project Title:
**Queen Elizabeth Hospital
Mental Health & Addictions
Emergency Department &
Short Stay Unit**

Sheet Title:
**REVISIONS TO
EXAM 5636 PLAN AND
ELEVATIONS**

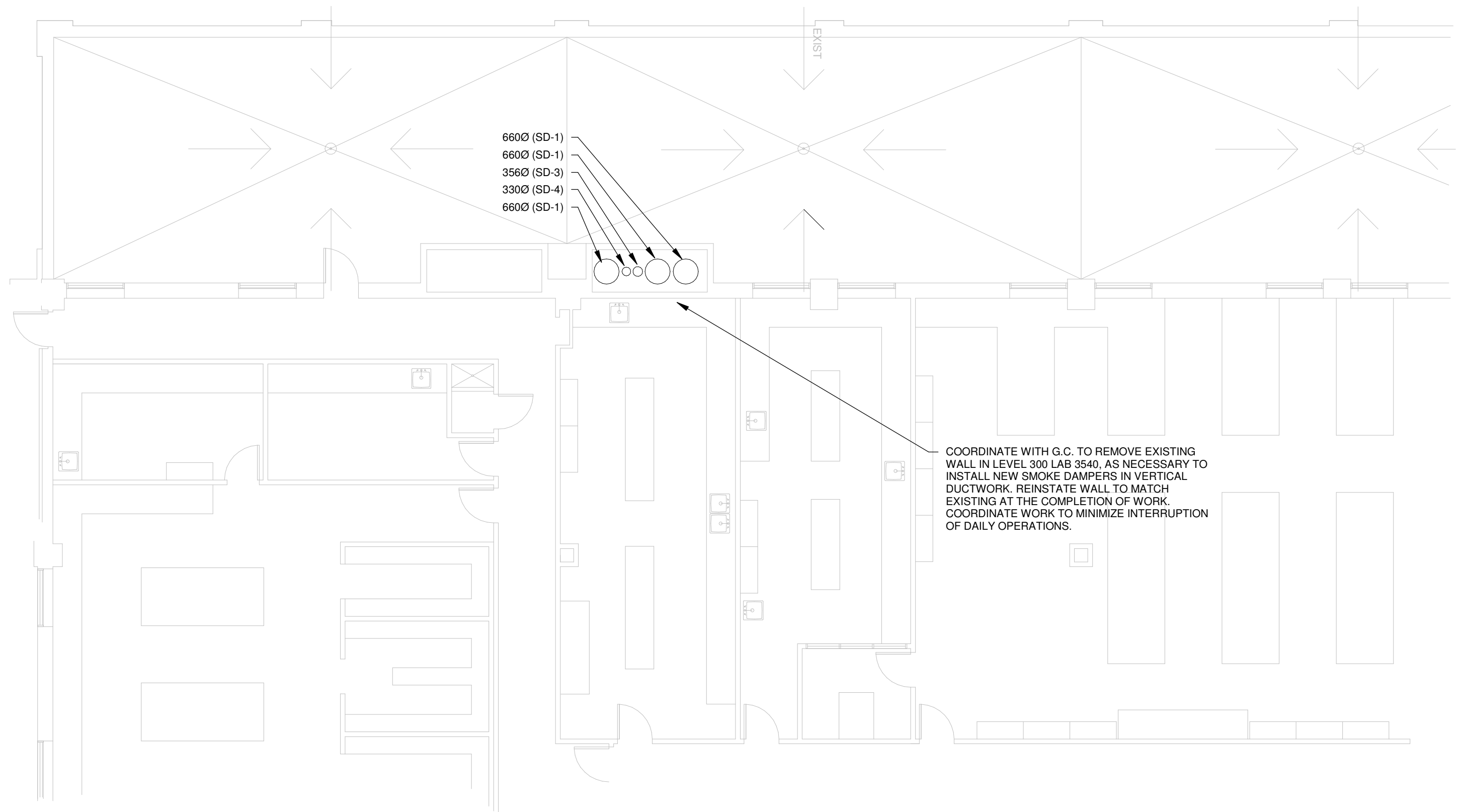
- ISSUED WITH ADD. #2

Date: APR. 6/22 Scale: 1 : 50
Drn By: JR Chk By: .
Project Number:
211025
Drawing Number:
ASK-002

TO BE READ IN CONJUNCTION WITH DRAWING 211025-2a, 2c & 2e/A503.



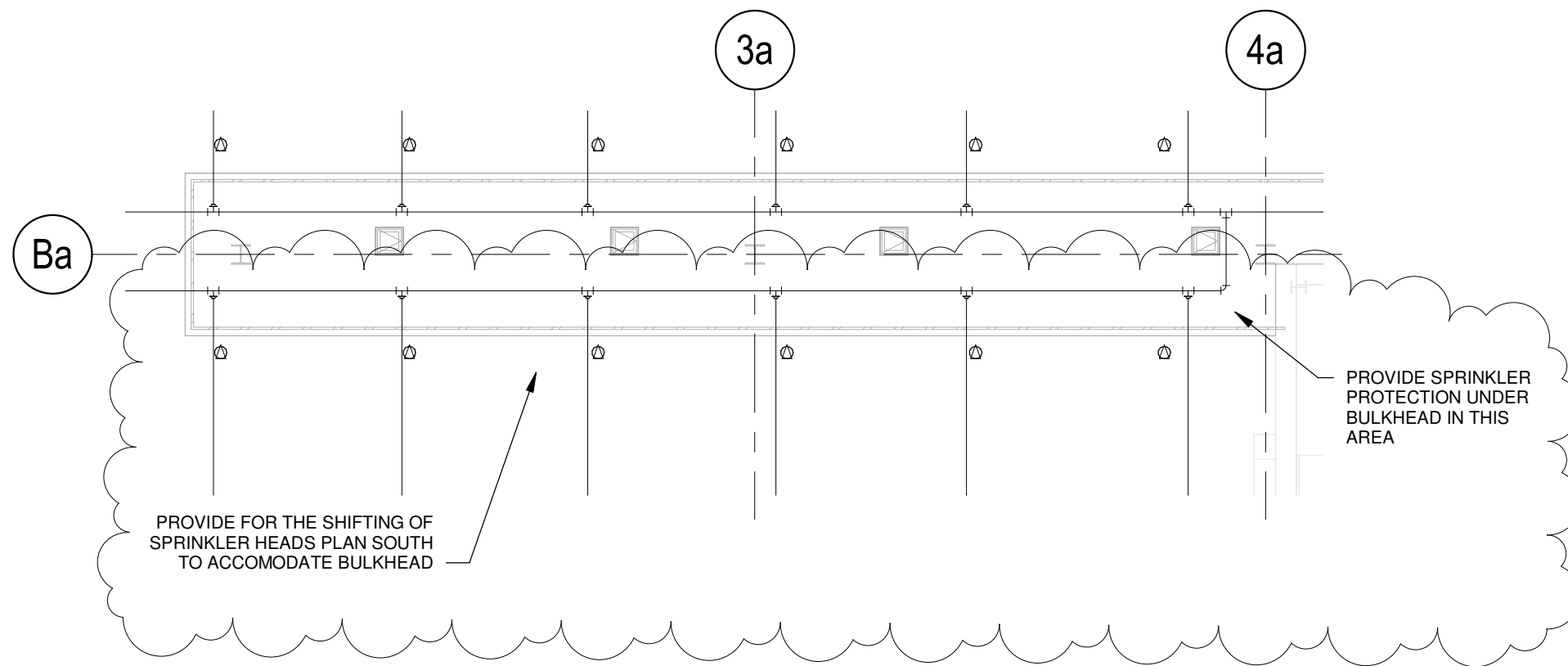
1 AHU-14 LINE DIAGRAM
MSK-001 NTS



- 660Ø (SD-1)
- 660Ø (SD-1)
- 356Ø (SD-3)
- 330Ø (SD-4)
- 660Ø (SD-1)

COORDINATE WITH G.C. TO REMOVE EXISTING WALL IN LEVEL 300 LAB 3540, AS NECESSARY TO INSTALL NEW SMOKE DAMPERS IN VERTICAL DUCTWORK. REINSTATE WALL TO MATCH EXISTING AT THE COMPLETION OF WORK. COORDINATE WORK TO MINIMIZE INTERRUPTION OF DAILY OPERATIONS.

1 Level 300 - Existing Ventilation Modifications
MSK-002 NTS



1 Level 100 - Sprinkler Revision
 MSK-003 1:100