

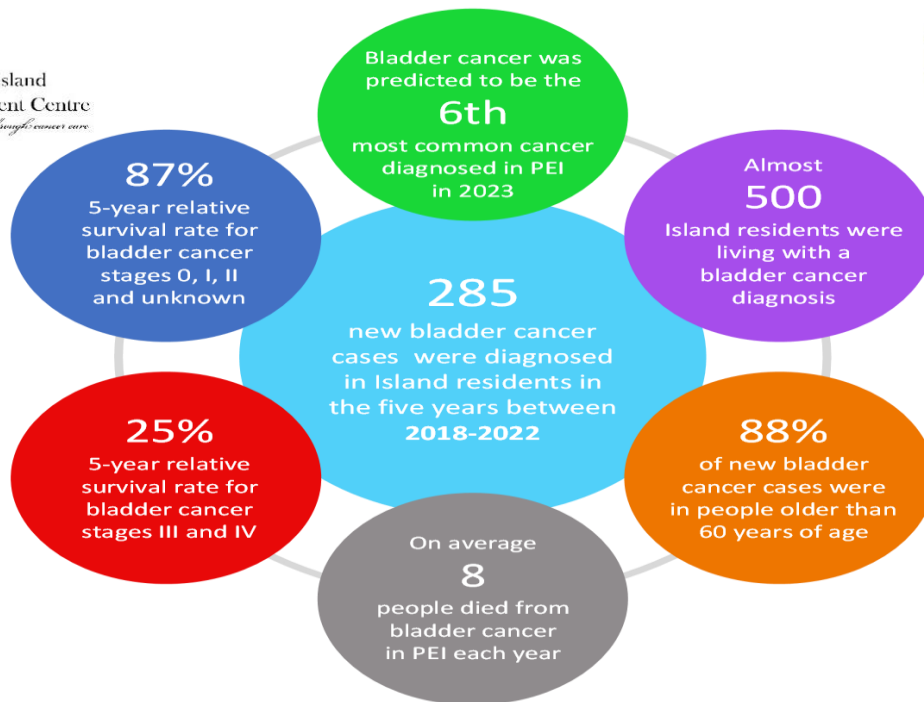
Bladder Cancer Trends in Prince Edward Island

Data on in situ and invasive bladder cancers from PEI Cancer Registry for January 1, 2018 to December 31, 2022

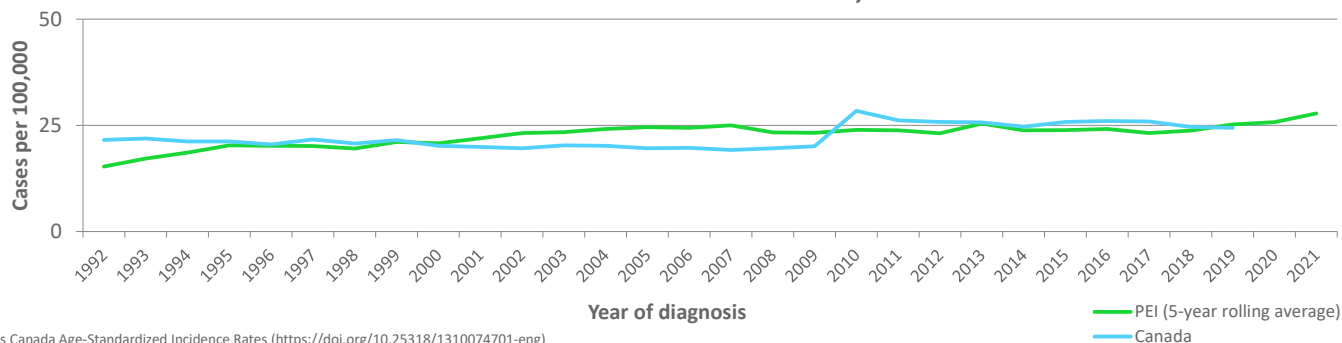


Prince Edward Island
Cancer Treatment Centre
Guiding your journey through cancer care

Health PEI
One Island Health System

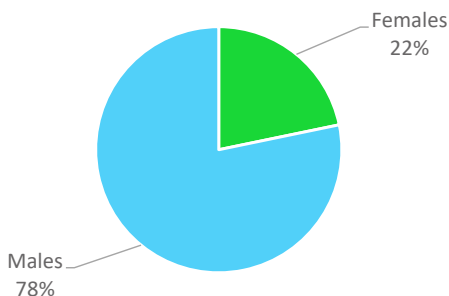


Rate of New Bladder Cancer Cases Over Time, PEI and Canada

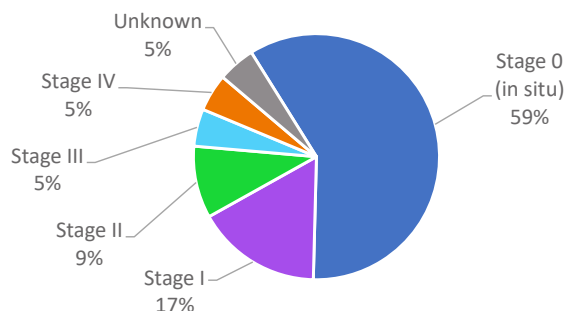


Statistics Canada Age-Standardized Incidence Rates (<https://doi.org/10.25318/1310074701-eng>)

Bladder Cancer Cases by Sex



Bladder Cancer Cases by Stage



Key Points and Recommendations

- ✓ Most bladder cancers in PEI were diagnosed at an early stage, when prognosis is excellent
- ✓ Cigarette smoking is the most common risk factor for bladder cancer. Help lower your risk for bladder cancer by not smoking, using safety practices to minimize workplace and environmental chemical exposure, drinking enough water, and being active
- ✓ Blood in the urine is the most common symptom of bladder cancer and may cause urine to appear bright red or cola colored. Consult with a health care provider if you have any of the following or are worried about your health: blood in your urine, a need to urinate more often or urgently, problems urinating (pain, burning, slow or weak urine stream), or pain in your lower back or pelvis